

TECHNICAL SPECIFICATION



STRESSOR HSM70



Permaquip Ltd

Old Sleningford Farm,
North Stainley,
Ripon,
North Yorkshire, HG4 3JB

Tel: +44 (0) 1623 513349

E-mail: sales@permaquip.co.uk
www.permaquip.co.uk





Description:

The Permaquip™ HSM70 Stressor is designed to be used in matching Permaquip OEM pairs to adjust the gap between rail ends for rail stressing, rail welding, repairing rail failures, and for installing insulated joints.

The HSM70 stressor is the most proven and durable Stressor on the market with up to 78 tonnes pull force. The non-slip type clamps enable the gap to be maintained accurately in order to facilitate a stress-free weld.

Numerous accessories such as lifting tongs, side rollers and under rail rollers are available.

The Permaquip™ Power Pack is designed to provide power for the Stressor. Petrol & Electric powered options are available and are the only Permaquip approved power source to be used on the equipment.

The Stressor is painted yellow for high visibility when on track.

Please note:

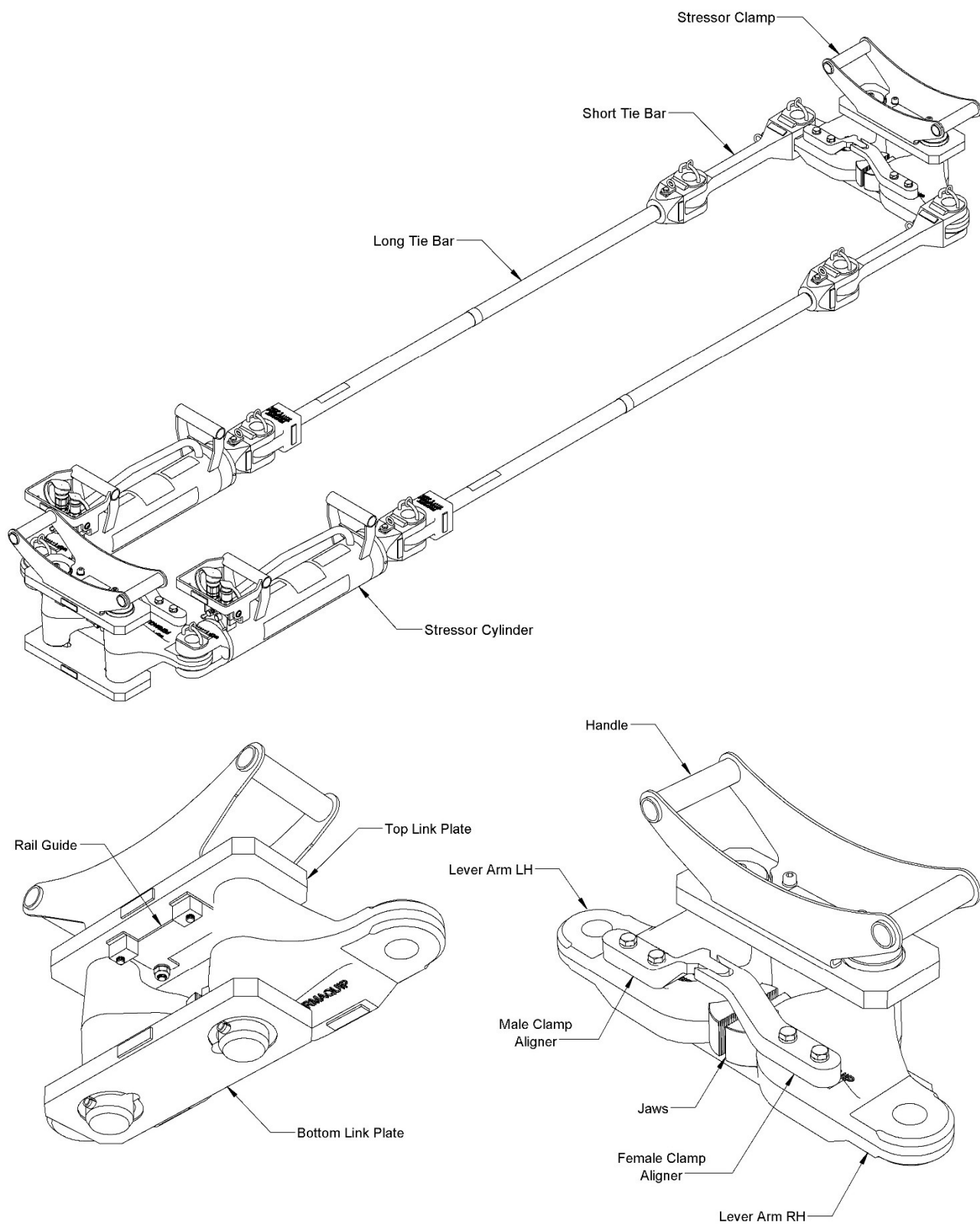
All information, illustrations and specifications in this Technical Sheet are based on the latest information available at the time of publication. The right is reserved to make changes at any time without notice.

Equipment operators and installers shall be responsible for ensuring that a safe working environment and safe systems of work are in place and in certain circumstances advice and permission from the controlling authority must be sought before any operation, installation or surveying work is carried out.

Permaquip™ is a trademark of Permaquip Ltd.

©2006 Permaquip Ltd.

Stressor Layout:



Technical Data:

Stressor Part Numbers:

• Stressor Half Set FFC UIC60	38871
• Stressor Half Set FFC STD	38872
• Electric Power Pack – FFC	38848
• Petrol Power Pack FFC	33282
• Hose Assembly FFC	33281
• Stressor Cylinder FFC G/A - Tested & Painted	S38868
• Stressor Clamp STD G/A - Tested & Painted	S38870
• Stressor Clamp UIC60 G/A - Tested & Painted	S38869
• Short Tie Bar Assembly - Tested & Painted	S38873
• 5ft Tie Bar Assembly - Tested & Painted	S38944
• 10ft Tie Bar Assembly - Tested & Painted	S38863
• Stressor Lifting/Carrying Tongs	38854

Overall dimensions:

• Length (5' Long Tie Bar)	3015 to 3396mm
• Width	713mm
• Height	367mm

Operating Pressures & Performance:

• Closed Flow	8,500 PSI (58.7 MNm ⁻²)
• Open Flow	2,800 PSI (19.4 MNm ⁻²)
• Max Pulling Force	78 tonnes (39 tonne each Ram Assembly)
• Max Pushing Force	32 tonnes (15 tonne each Ram Assembly)
• Max Ram Stroke	381.2mm

Compatible Rail Sections:

- BS90A, 95A, 100A, 113A
- UIC50, 54 & 60
- IRS 75R & 90R
- 95 RBH
- S49
- AS41, AS47

Note that the appropriate rail guide will need to be fitted.

Please contact Permaquip Ltd if the stressor is required to be used with other rail sections

Product Compliance:

- Directive 2006/42/EC
Safety of Machinery.
- Directive 93/68/EEC
CE Marking.
- UKCA Marking

PERMAQUIP STRESSOR

