

Workshop manual

K 1 PACE, K 1 PACE Rail



English

Contents

1 Introduction

1.1 Document description.....	3
1.2 Target group.....	3
1.3 Revisions.....	3
1.4 Safety.....	3
1.5 Servicing tools.....	3

2 Safety

2.1 Safety definitions.....	4
2.2 General safety instructions.....	4
2.3 Special safety instructions.....	4
2.4 Symbols on the product.....	4

3 Servicing data

3.1 Tightening torques	6
------------------------------	---

4 Servicing tools

4.1 Servicing tools overview.....	14
-----------------------------------	----

5 Product overview for repair and servicing

5.1 Product overview.....	15
5.2 Product overview K 1 PACE Rail.....	16

6 Troubleshooting

6.1 To troubleshoot the product.....	17
--------------------------------------	----

7 Maintenance

7.1 Maintenance schedule.....	23
-------------------------------	----

8 Repair instructions

8.1 Handle half.....	24
8.2 Control unit.....	25
8.3 Power trigger and power trigger lockout.....	26
8.4 Wiring assembly.....	26
8.5 Control panel.....	27
8.6 Blade guard.....	27
8.7 Drive belt	28
8.8 Pulleys.....	29
8.9 Cutter arm.....	29
8.10 Motor.....	30
8.11 Gearbox.....	31
8.12 Front handle.....	34
8.13 Wet system.....	34

9 Diagrams

9.1 Wiring diagram.....	37
-------------------------	----

1 Introduction

1.1 Document description

This manual gives a full description of how to do maintenance and repair on the product. It also gives safety instructions that the personnel must obey.

1.2 Target group

This manual is for personnel with a general knowledge of how to do repair and do servicing. All personnel that do repair or do servicing on the product must read and understand the manual.

1.3 Revisions

Changes to the product can cause changes to the maintenance work and spare parts. Separate information is sent out for each change.

Read the manual together with all received information about changes to maintenance and spare parts for the product.

1.4 Safety



WARNING: All personnel that repair or do servicing on the product must read and understand the safety instructions in this workshop manual.

1.5 Servicing tools

The manual gives information about necessary servicing tools. Always use original tools from Husqvarna.

2 Safety

2.1 Safety definitions

Warnings, cautions and notes are used to point out specially important parts of the manual.



WARNING: Used if there is a risk of injury or death for the operator or bystanders if the instructions in the manual are not obeyed.



CAUTION: Used if there is a risk of damage to the product, other materials or the adjacent area if the instructions in the manual are not obeyed.

Note: Used to give more information that is necessary in a given situation.

2.2 General safety instructions



WARNING: Read the warning instructions that follow before you use the product.

The service center that repairs the product must have safety devices that obey local regulations. Warnings and cautions are used to point out specially important parts of the workshop manual.

2.3 Special safety instructions

- Apply a new warning label if a warning symbol on the product is damaged or missing.
- Do not use accessories or spare parts that are not approved by the manufacturer. Do not do changes that are not approved by the manufacturer. This can cause injury or death to the operator or other persons.
- Use protective gloves and eye protection. Approved protective goggles must agree with the ANSI Z87.1 standard in the USA or EN 166 in EU countries.
- When you use compressed air, do not point the airflow in the direction of your body. Air can go into the blood circulation and kill you.
- Use approved hearing protection. Noise from the product can result in permanent hearing loss.
- The product can cause sparks. Do not operate the product near flammable materials.

2.3.1 To remove the battery

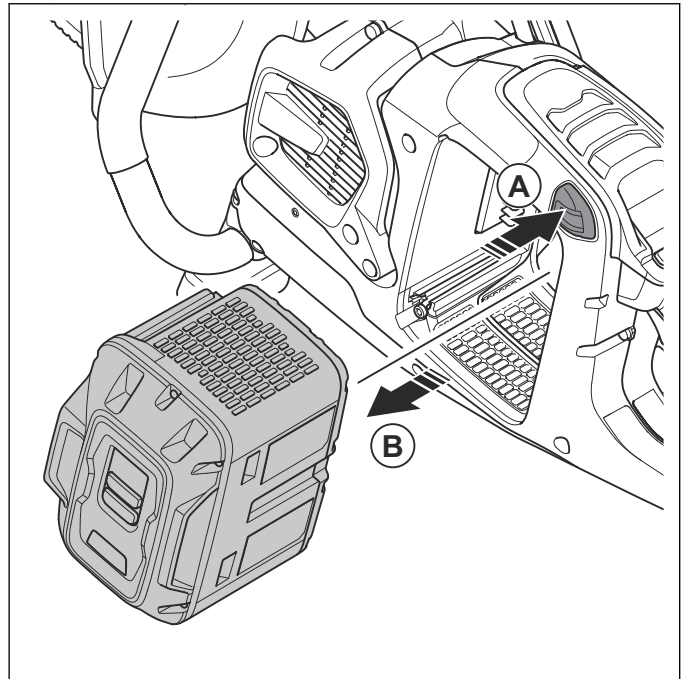


WARNING: Always remove the battery before you do repairs or do servicing on the product.



WARNING: Do not put the battery in the battery holder before the product is assembled.

- Push the battery release button (A) and remove the battery (B).



2.4 Symbols on the product



WARNING: This product can be dangerous and cause serious injury or death to the operator or others. Be careful and use the product correctly.



Read the operator's manual carefully and make sure that you understand the instructions before you use this product.



Use approved protective helmet, hearing protection, eye protection and respiratory protection.



This product complies with applicable EC Directives.



Dust forms when cutting. The dust can cause injuries if inhaled. Use an approved respiratory protection. Always provide for good ventilation.



Sparks from the cutting blade can cause fire in fuel, wood, clothes, dry grass or other flammable materials.



WARNING! Kickbacks can be sudden, rapid and violent and can cause life threatening injuries. Read and understand the instructions in the manual before using the product.



Make sure that the cutting blade does not have cracks or other damages.



Do not use circular saw blades.

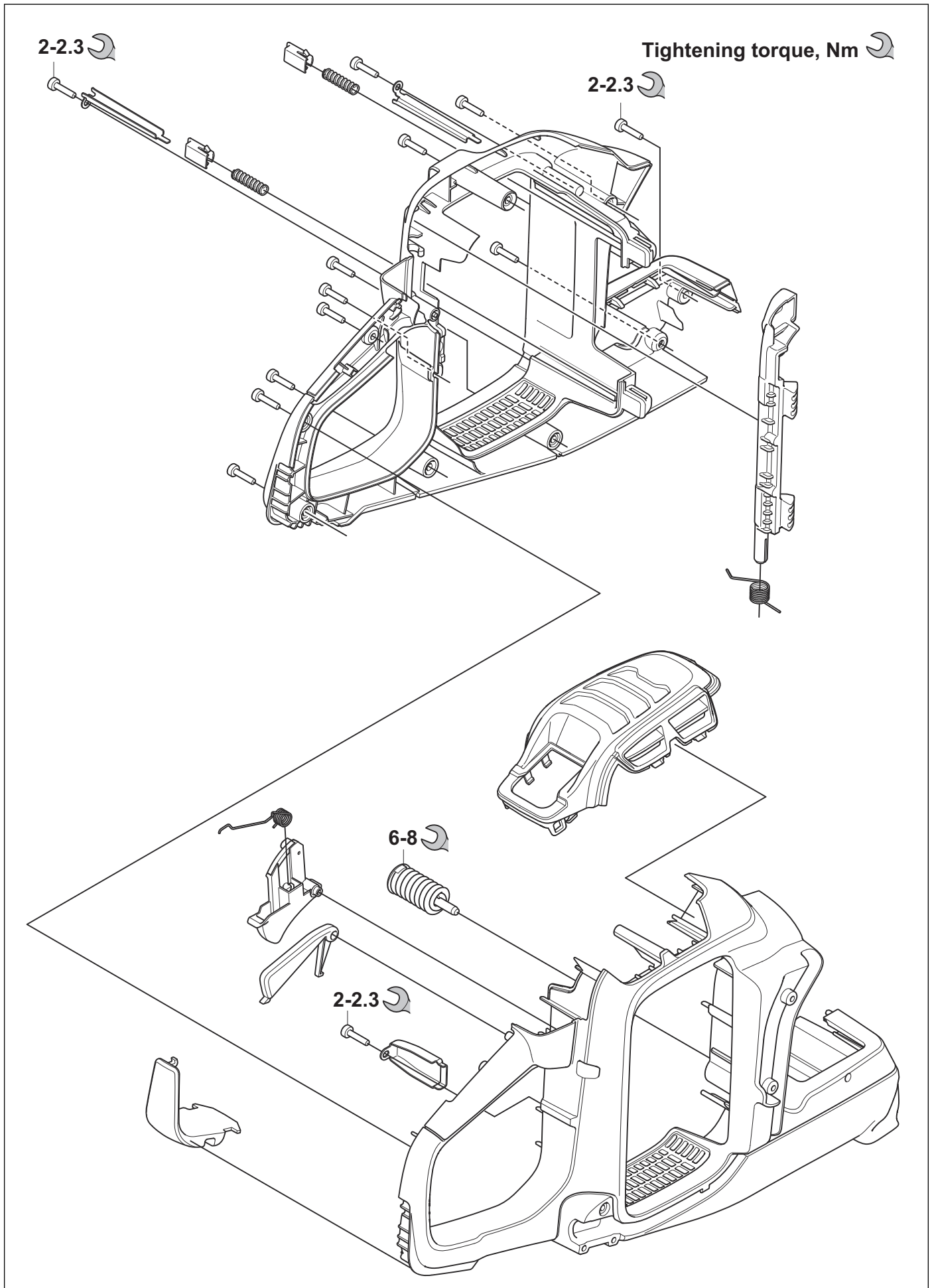


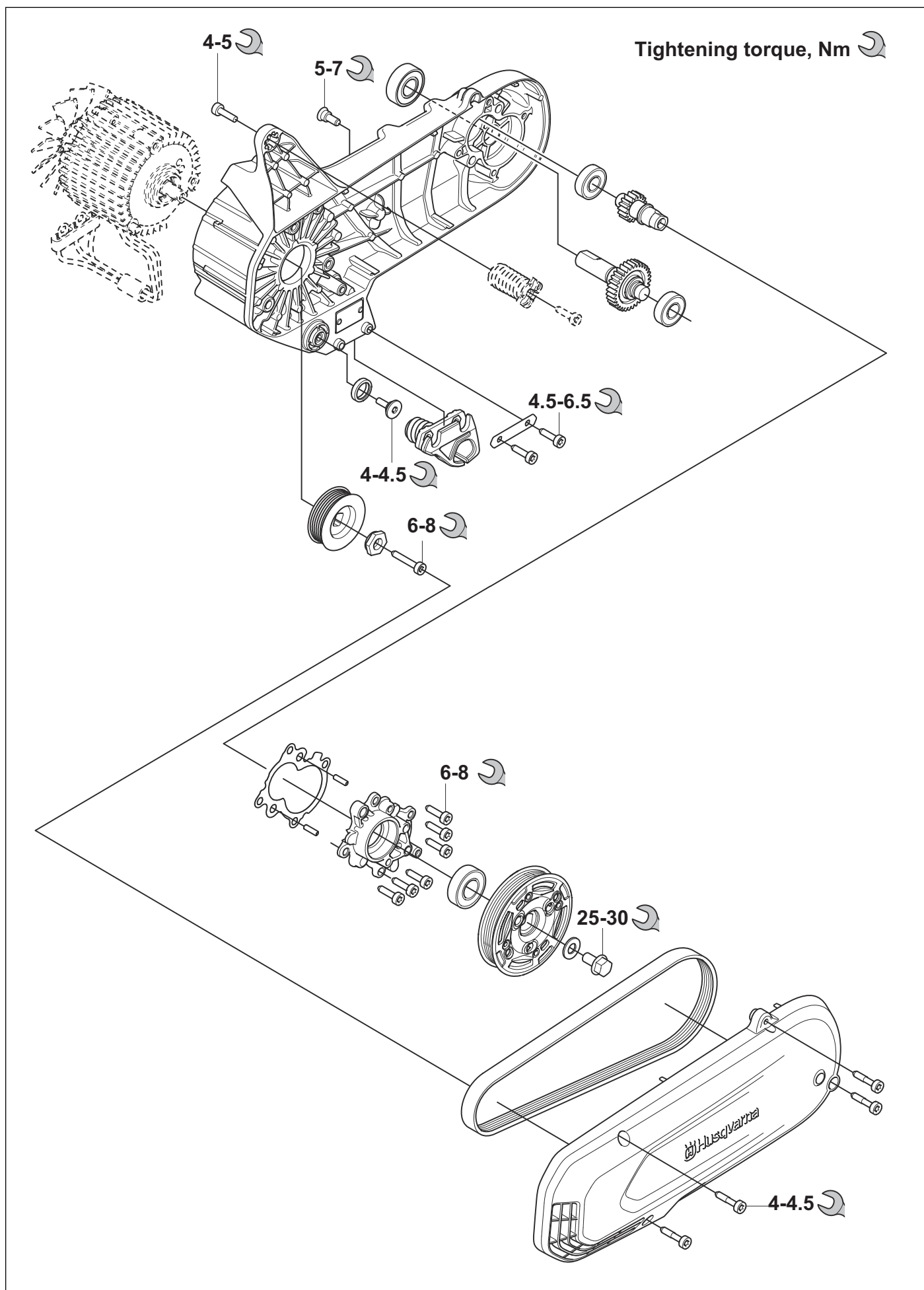
Environmental mark. The product or package of the product is not domestic waste. Recycle it at a recycling location for electrical and electronic equipment.

Note: Other symbols/decals on the product refer to certification requirements for some markets.

3 Servicing data

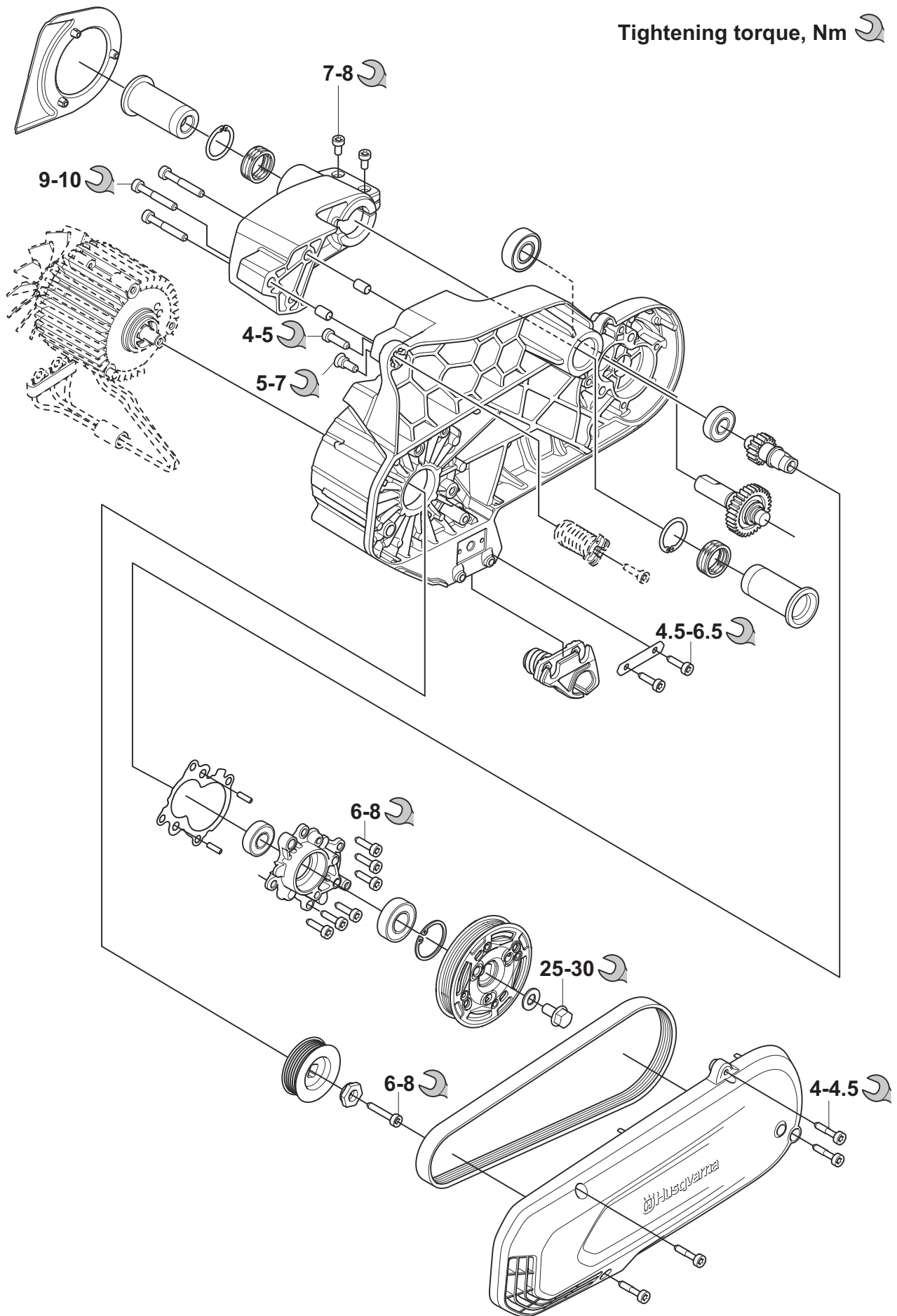
3.1 Tightening torques





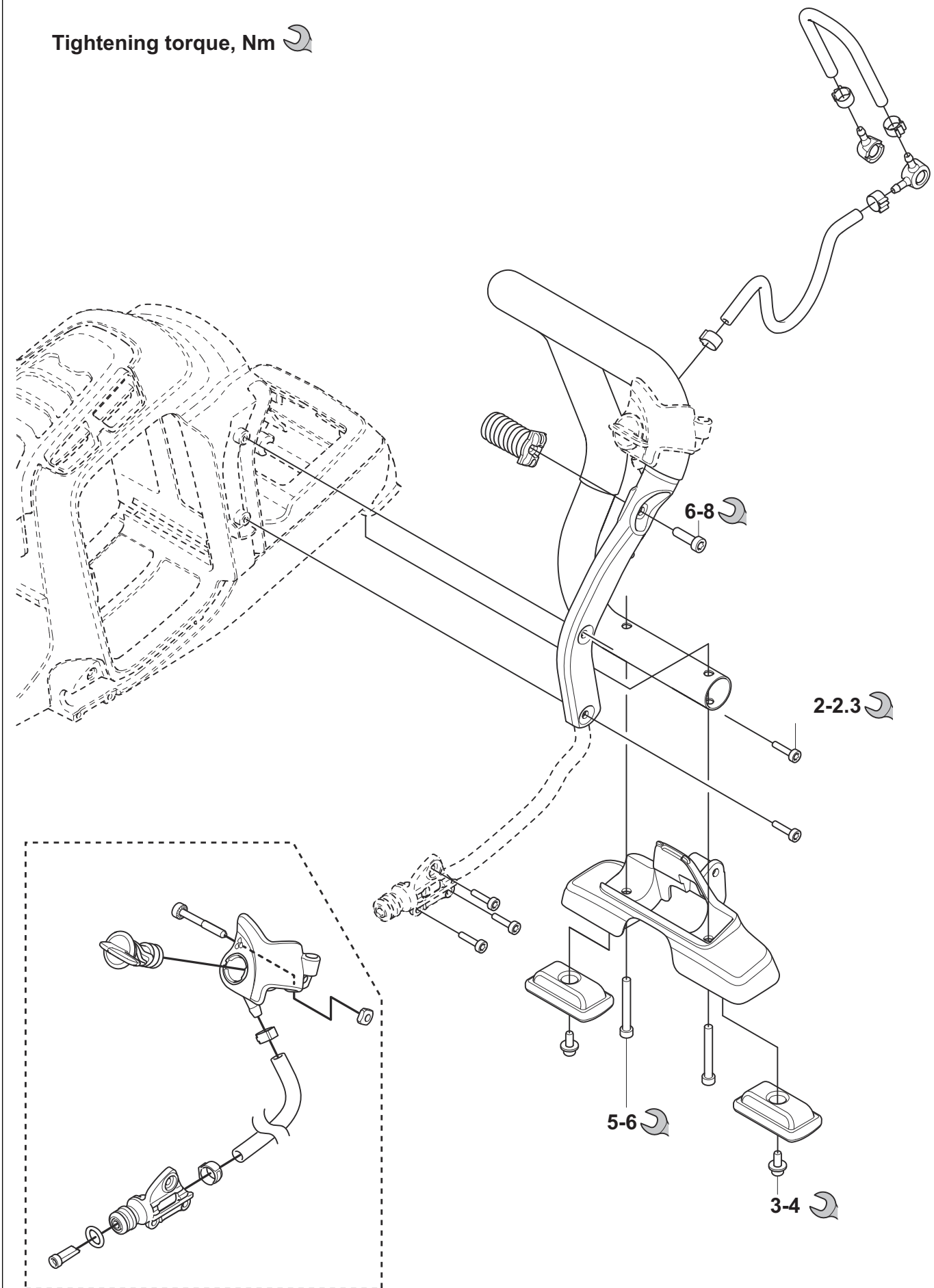
K 1 PACE

Tightening torque, Nm 




K 1 PACE Rail

Tightening torque, Nm 



Tightening torque, Nm 

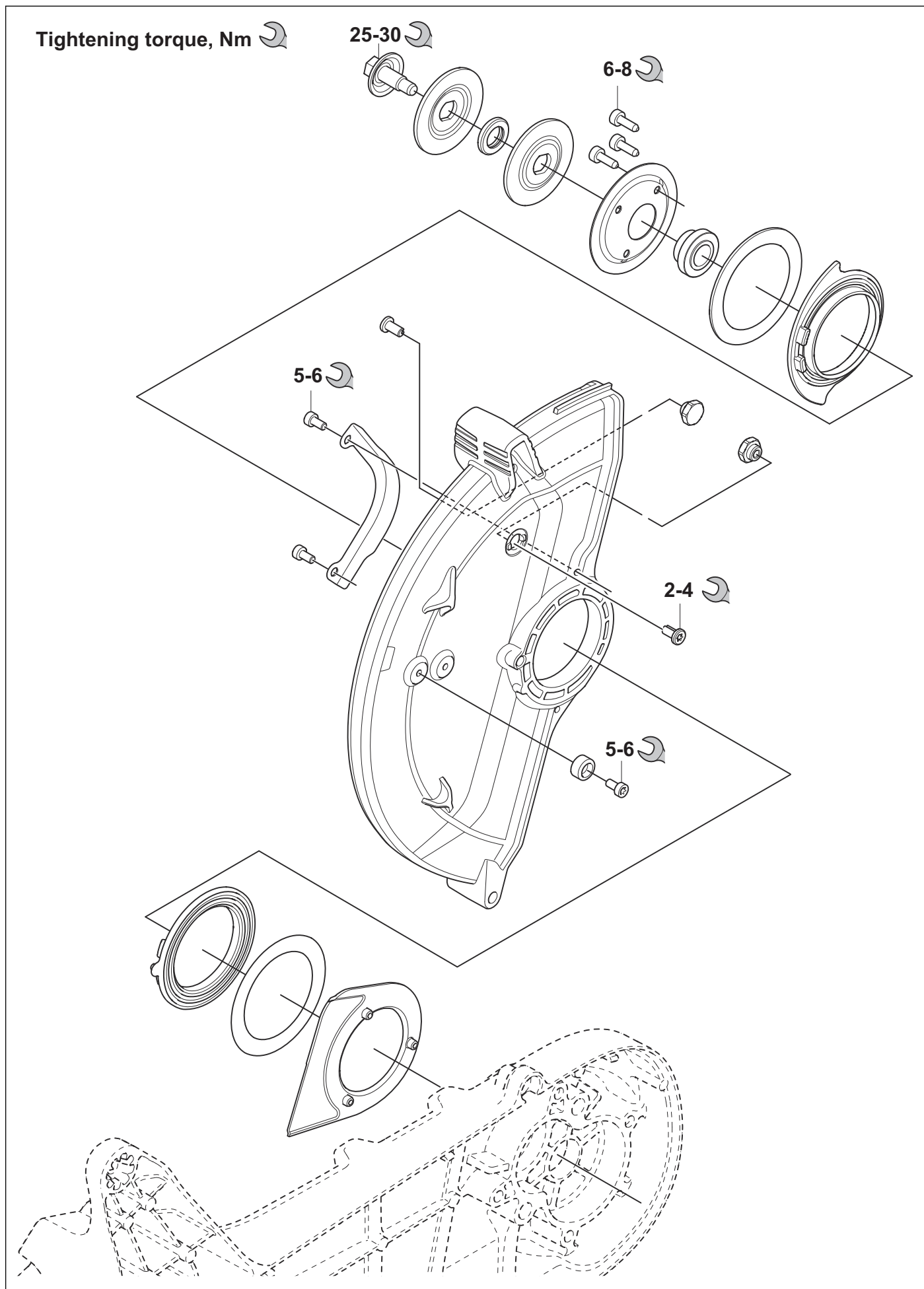
25-30 

6-8 

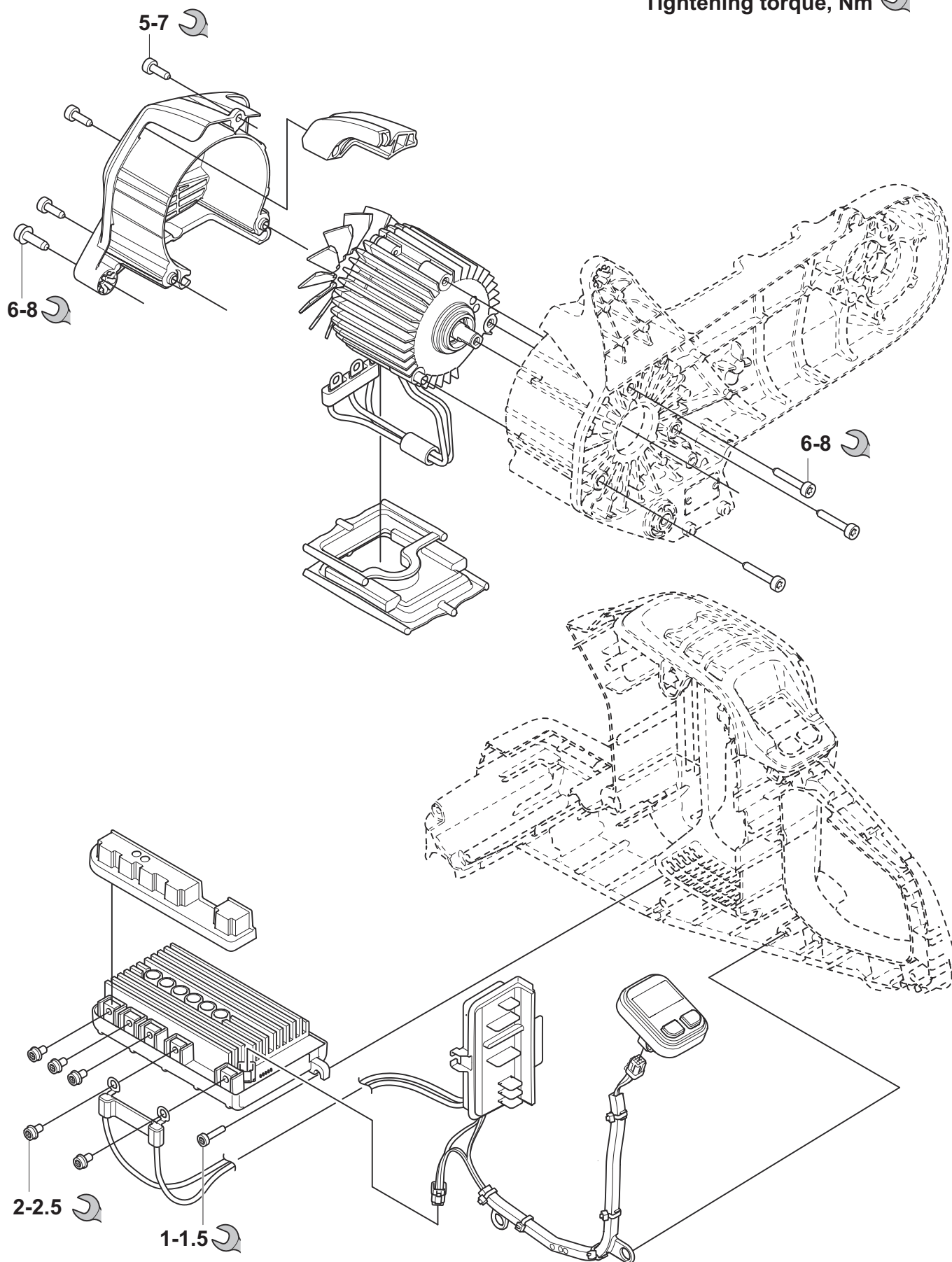
5-6 

2-4 

5-6 

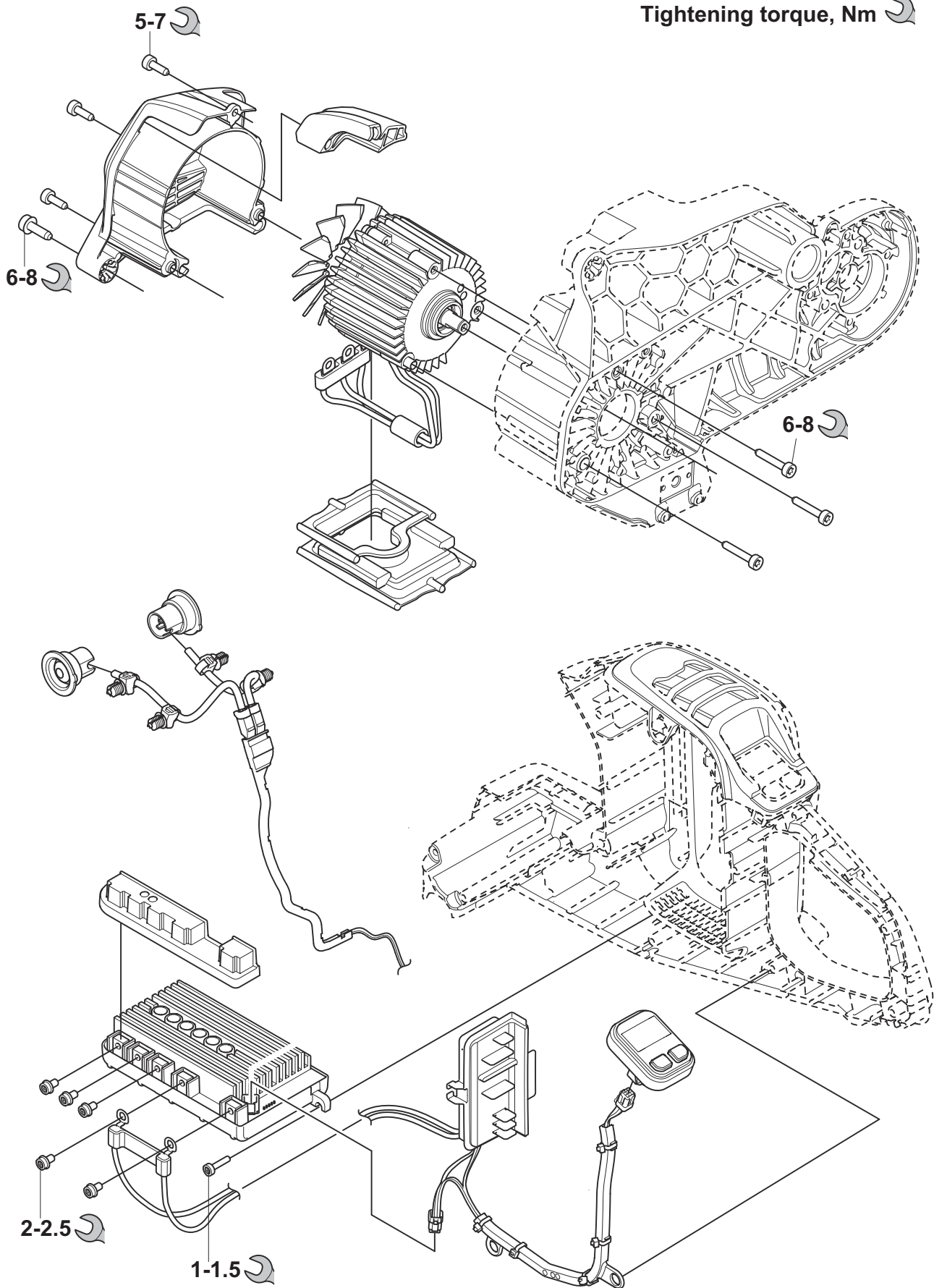


Tightening torque, Nm 

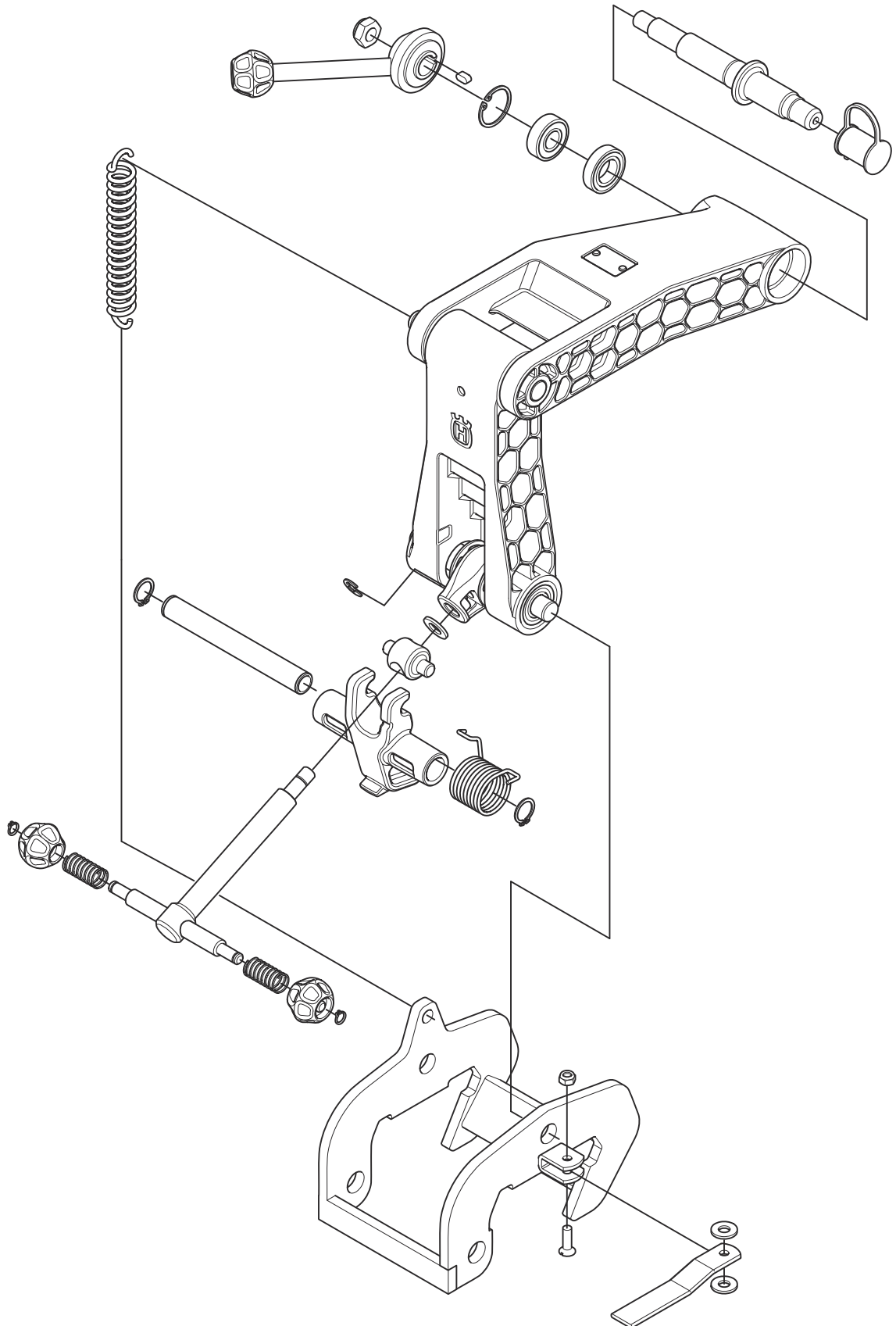


K 1 PACE

Tightening torque, Nm 



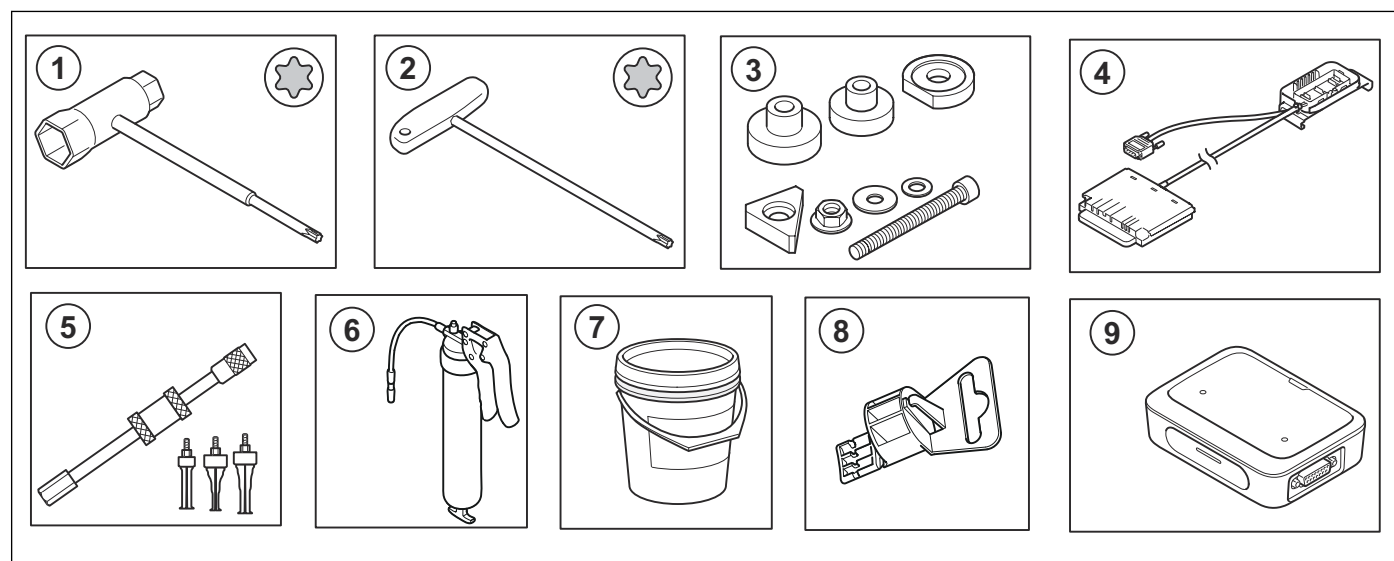
K 1 PACE Rail



K 1 PACE Rail

4 Servicing tools

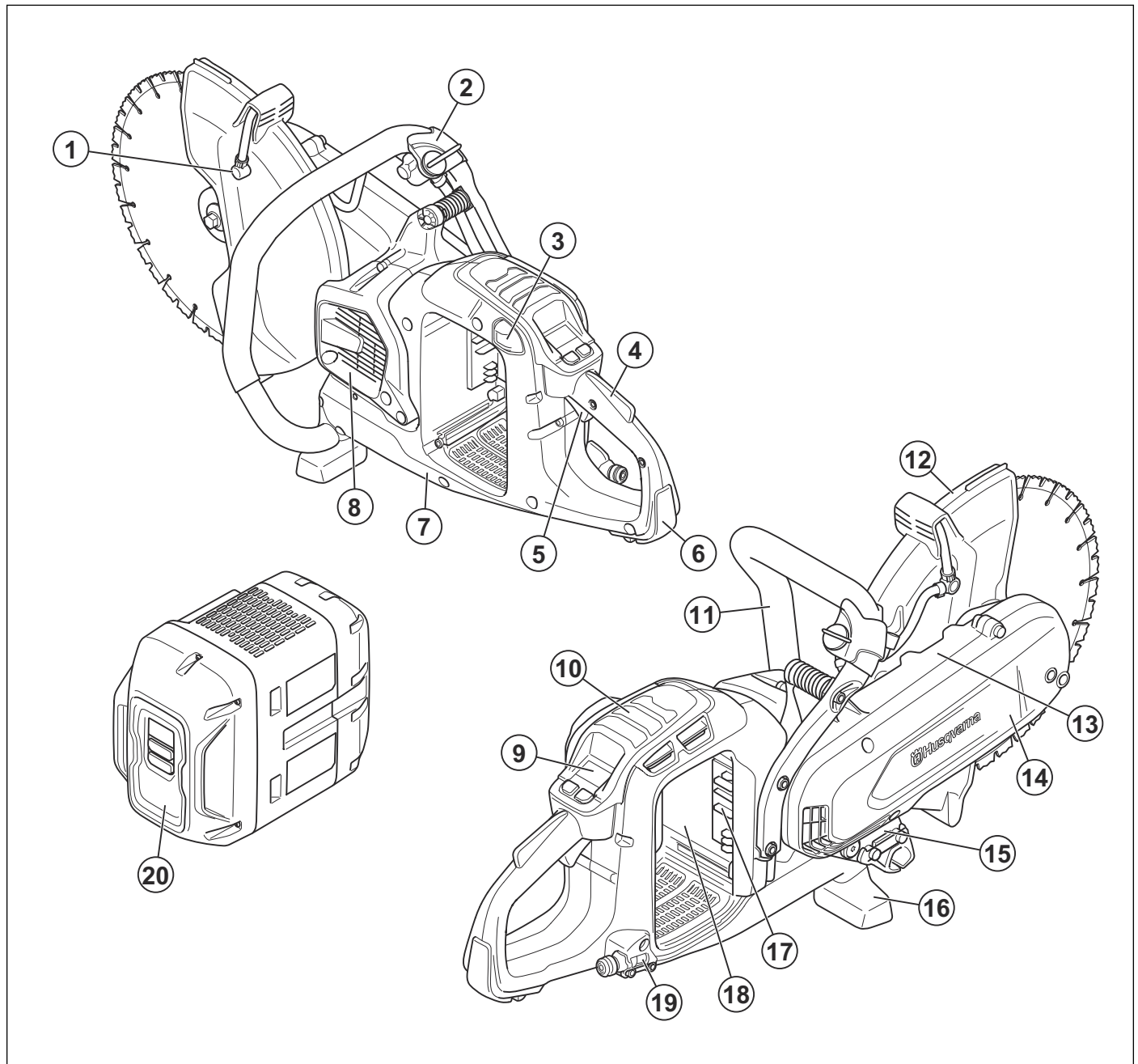
4.1 Servicing tools overview



Position	Designation	Used for	Order No./Source
1	Combination wrench	General.	506 38 26-01
2	Key Torx T27	General.	502 71 27-02
3	Bearing press	To assemble blade shaft bearing.	506 37 61-02
4	Adapter cable for the Husqvarna Service Hub	To update software together with the Husqvarna Service Hub.	529 47 15-01
5	Internal bearing extractor	To remove the bearings from the gearbox.	Multiple suppliers
6	Grease gun	To apply grease in the gearbox.	506 38 49-02
7	Grease	For the gearbox.	588 81 48-01
8	Belt assembly tool	To install and remove the drive belt.	596 55 26-02
9	Interface box for Rest Of the World	To connect the product to the Husqvarna Service Hub.	598 07 28-01
9	Interface box for USA	To connect the product to the Husqvarna Service Hub.	598 07 28-04

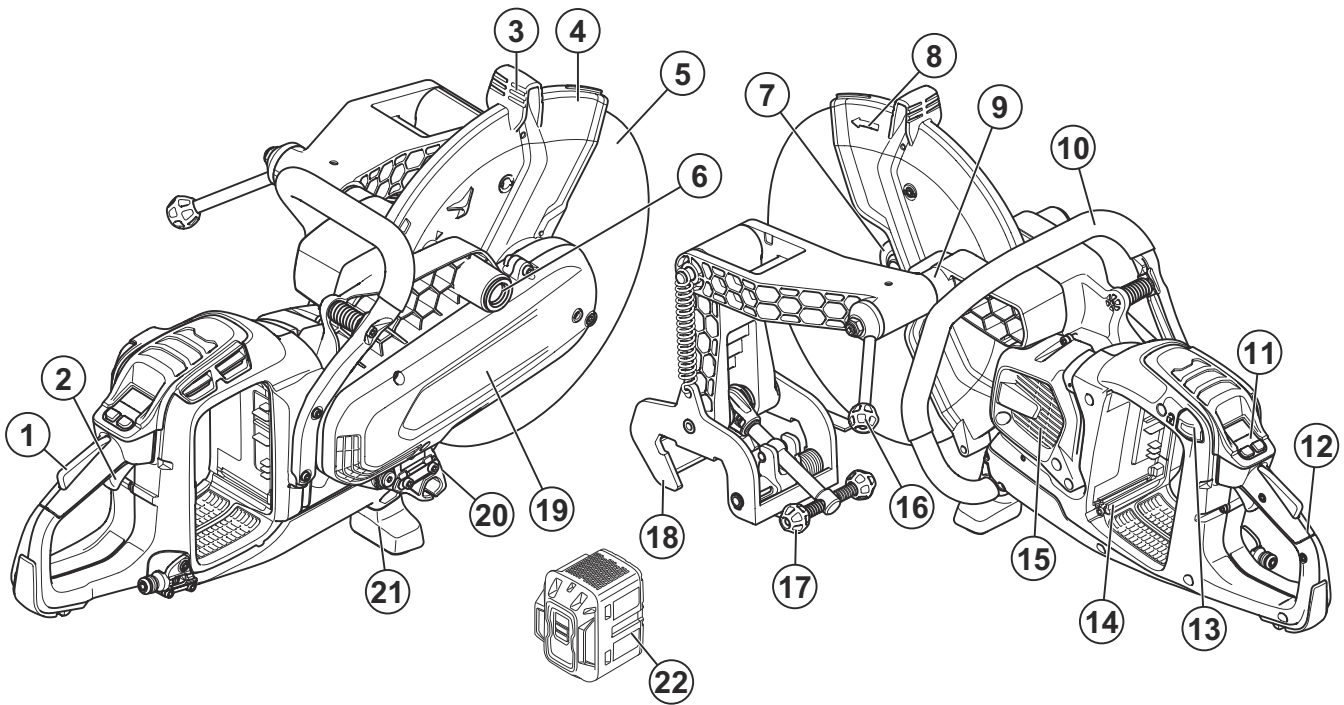
5 Product overview for repair and servicing

5.1 Product overview



- | | |
|---------------------------|----------------------------------|
| 1. Water nozzle | 12. Blade guard |
| 2. Water valve | 13. Cutter arm |
| 3. Battery release button | 14. Belt guard |
| 4. Power trigger lockout | 15. Type plate |
| 5. Power trigger | 16. Front ground support |
| 6. Rear ground support | 17. Battery connector |
| 7. Handle half left | 18. Battery slot |
| 8. Motor cover | 19. Water connection with filter |
| 9. Control panel | 20. Battery |
| 10. Cover | |
| 11. Front handle | |

5.2 Product overview K 1 PACE Rail



1. Power trigger lockout
2. Power trigger
3. Adjustment handle for blade guard
4. Blade guard
5. Cutting blade
6. Installation point for rail fixture on the right side
7. Flange for blade, spindle, arbor bushing
8. Spindle direction of rotation
9. Installation point for rail fixture on the left side
10. Front handle
11. Control panel
12. Rear handle
13. Battery release button
14. Battery slot
15. Motor air intake
16. Power cutter lock handle
17. Rail lock handle
18. Rail fixture
19. Belt guard
20. Type plate
21. Ground support front
22. Battery

6 Troubleshooting

6.1 To troubleshoot the product

1. Do the steps that follow and make a note of all the faults you find:
 - a) Do a visual inspection of the product, refer to *To do a visual inspection of the product on page 17*.
 - b) Do a function test of the product, refer to *To do a function test of the product on page 17*.
 - c) Connect the product to Husqvarna Service Hub, refer to *To connect the Husqvarna Service Hub on page 17*.
 2. Refer to *Troubleshooting on page 19* and *LED indicators on the control panel on page 21* to correct the faults you find.
 3. Do a function test again to make sure that the product operates correctly. Refer to *To do a function test of the product on page 17*.
- Push the On/Off-button and make sure that the battery indicator comes on. If the battery indicator does not come on, refer to *Troubleshooting on page 19*.
 - Make sure that no warning indicators or X-Halt light comes on or start to flash when you push the On/Off-button. If a warning indicator or X-Halt light comes on or start to flash, refer to *LED indicators on the control panel on page 21*. For Rail, activate the clamp switch with a RA 11 or a mandrel.
 - Make sure that the blade shaft turns when you pull the power trigger. If the blade shaft does not turn, refer to *Troubleshooting on page 19*.
 - Start the product and keep it on for 15 seconds. Make sure that no vibrations or unusual noises come from the product and that the warning indicators stay off. If unusual vibrations or noises come from the product or if a warning indicator comes on, refer to *Troubleshooting on page 19*.

6.1.1 To do a visual inspection of the product

1. Do a check of the blade guard. Replace the blade guard if it is damaged, refer to *To disassemble and assemble the blade guard on page 27*.
2. Do a check of the handle halves. Replace the handle halves if they are damaged, refer to *To disassemble and assemble the handle half on page 24*.
3. Do a check of the front handle. Replace the front handle if it is bent or damaged, refer to *To remove and install the front handle on page 34*.
4. Do a check of the water valve. Replace the water valve if it is damaged, refer to *Wet system on page 34*. Not applicable for K 1 PACE RAIL.
5. Do a check of the ground support. Replace the ground support if it is damaged, refer to *To remove and install the front handle on page 34*.
6. Do a check of the cutter arm. Replace the ground support if it is damaged, refer to *To remove and install the cutter arm on page 29*.
7. Make sure that all screws are installed. Tighten all screws to the correct torque, refer to *Tightening torques on page 6*.

6.1.2 To do a function test of the product

- Make sure that the battery fits in the product. If the battery does not fit, make sure that the battery is not damaged.
- Do a check of the water nozzle and make sure that water sprays from the water nozzle in the blade guard. If water does not spray, refer to *Troubleshooting on page 19*. Not applicable for K 1 PACE RAIL

6.1.3 To troubleshoot the product with the Husqvarna Service Hub

The Husqvarna Service Hub is used with a computer (not included) to troubleshoot the product and to update the software in the product.

You must always connect the product to the Husqvarna Service Hub when you troubleshoot the product, also when the problem is a visual damage on the product.

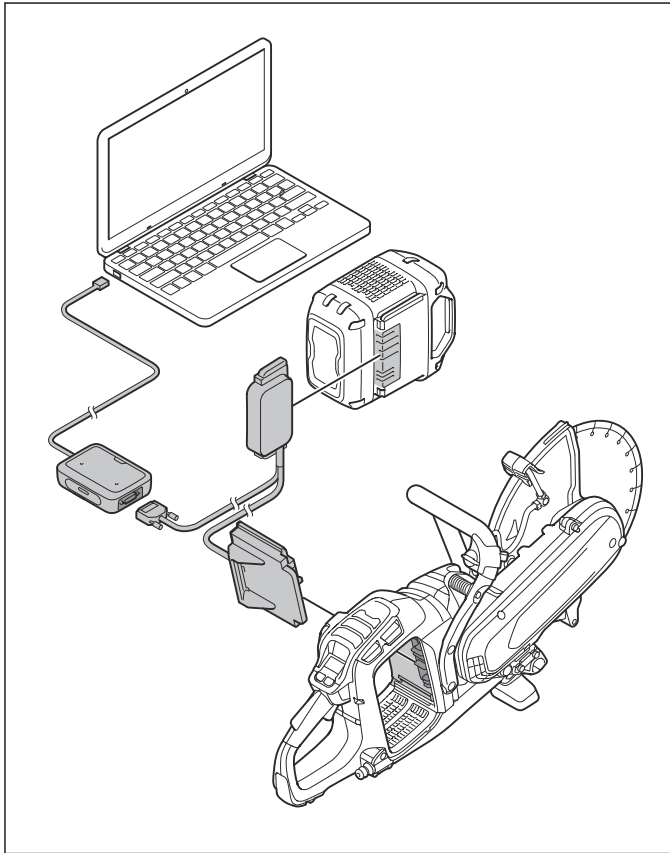
1. Connect the product to the Husqvarna Service Hub. Refer to *To connect the Husqvarna Service Hub on page 17*.
2. Read the error codes in the Husqvarna Service Hub.
3. Use the Husqvarna Service Hub to update the software of the product.
4. Do a diagnostic test in Husqvarna Service Hub.

6.1.4 To connect the Husqvarna Service Hub

Note: The product can start when connected to Husqvarna Service Hub. Always remove the cutting

blade before you connect the product to Husqvarna Service Hub.

1. Connect the adapter cable for the Husqvarna Service Hub to the battery and the battery connector on the product.



2. Connect the cable to the Husqvarna Service Hub.

3. Start the product to do a software update.

Note: Refer to the manual of the Husqvarna Service Hub for instructions and obey the instructions.

6.1.5 To do troubleshooting of the Husqvarna Service Hub

If there is no signal to the Husqvarna Service Hub when it is connected to the product, do the procedure that follows.

1. Make sure that the connectors on the battery and on the product are clean and not damaged. Replace the battery or control unit on the product if there is damage.
2. Make sure that the cable connected to the computer that runs the Husqvarna Service Hub is clean and not damaged. Replace the cable if it is damaged.
3. Restart the computer.
4. Install the software again.

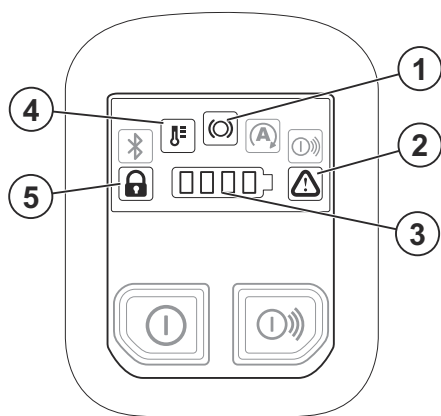
6.1.6 Troubleshooting

Problem	Cause	Solution
The product does not start. No LEDs come on when you push the On/Off button on the product.	The battery is damaged.	Do a test with a different battery.
	The plug between the battery and the product is damaged.	Make sure that the power connectors between the battery and the product are not dirty or damaged.
	The battery is not correctly installed in the product.	Remove the battery and install it correctly.
	The control unit is damaged.	Replace the control unit, refer to <i>To remove and install the control unit on page 25</i> . Connect the product to Husqvarna Service Hub and refer to the spare part change flow.
	The control panel is damaged.	Replace the control panel, refer to <i>To remove and install the control panel on page 27</i> . Connect the product to Husqvarna Service Hub and refer to the spare part change flow.
	The cables between the control unit and the control panel are damaged.	Replace the cables between the control unit and the control panel, refer to <i>To remove and install the wiring assembly on page 26</i> .
	The cables between the control unit and the main switch are damaged.	Replace the cables between the control unit and the main switch, refer to <i>To remove and install the wiring assembly on page 26</i> .
	A fuse is blown.	Do a test of the fuse. If the fuse is broken, replace the control unit and the fuse, refer to <i>To remove and install the control unit on page 25</i> .
The product is on, but a warning indicator or a X-Halt indicator is on or flashes.	There is an error in the product.	Refer to <i>LED indicators on the control panel on page 21</i> .
The product is on but the motor does not start when you push the power trigger.	The power trigger is damaged.	Start the product and pull the power trigger again with less load. Do a test of the power trigger in the Husqvarna Service Hub.
	The cables in the motor is damaged.	Replace the motor, refer to <i>To remove and install the motor on page 30</i> .
	The motor is damaged.	Replace the motor, refer to <i>To remove and install the motor on page 30</i> .
The motor is on but the blade shaft does not rotate.	The drive belt is damaged or worn.	Replace the drive belt, refer to <i>Drive belt on page 28</i> .
An unusual noise comes from the front bearings.	The bearings are damaged or worn.	Replace the bearings, refer to <i>To remove the bearings on page 32</i> and <i>To install the blade shaft bearing with a Husqvarna bearing press on page 32</i> or <i>To install the bearings with a standard press on page 33</i> .
There are unusual vibrations when the product is on.		

Problem	Cause	Solution
The product makes a sudden movement when you push the power trigger, then immediately stops.	There is a short circuit in the control unit.	Replace the control unit, refer to <i>To remove and install the control unit on page 25</i> . Connect the product to Husqvarna Service Hub and refer to the spare part change flow.
The speed of the motor is irregular.	The control panel is damaged.	Replace the control panel, refer to <i>To remove and install the control panel on page 27</i> .
	The power trigger is damaged.	Replace the power trigger, refer to <i>To remove and install the power trigger and the power trigger lockout on page 26</i> .
The product stops when you apply work load.	There is too much work load on the product.	Start the product again and apply less work load.
The product does not connect to the Husqvarna Service Hub.	The control unit is damaged.	Replace the control unit, refer to <i>To remove and install the control unit on page 25</i> . Connect the product to Husqvarna Service Hub and refer to the spare part change flow.
	The adapter cable is damaged.	Do a check of the adapter cable.
	The interface box is damaged.	Use a different interface box.
Not applicable for K 1 PACE RAIL The water nozzle does not spray water on the diamond blade.	The water nozzle on the blade guard is blocked.	Do a check of the water nozzle on the blade guard. Clean the water nozzle on the blade guard if it is necessary.
	The water hose is blocked.	Do a check of the water hose. Make sure that there is no blockage.
	The filter is clogged.	Do a check of the water inlet filter. Clean the water inlet filter if it is necessary.
Only K 1 PACE Rail		
The product does not cut straight.	The sleeve is loose.	Do a check of the sleeve, make sure that it is tightened correctly.
	The sleeve is not adjusted.	Adjust the sleeve.
	There is dirt around the blade shaft.	Clean the area around the blade shaft.
	The cutter arm is bent.	Replace the cutter arm.
	The threads on the locking shaft are damaged.	Clean the threads and replace the locking shaft if necessary.
	The threads in the sleeve are damaged.	Clean the threads and replace the sleeve if necessary.
	The rail attachment is bent.	Replace the RA 11.
	There are metal burr on the rail attachment.	Remove metal burr.
	The arms of RA 11 are bent.	Replace the RA 11.

6.1.7 LED indicators on the control panel

The LED indicators on the control panel show the state of charge of the battery and if there are problems with the product.



LED indicator	Indication	Cause	Solution
1	The indicator flashes.	The X-Halt function is engaged.	Wait for the product to cool down and the X-Halt function to disengage.
	The indicator is on.	You must do servicing of the X-Halt function.	Replace the drive belt, refer to <i>Drive belt on page 28</i> . Reset the X-Halt light in the Husqvarna Service Hub.
2	The indicator flashes.	There is a battery error.	Pull the power trigger 1 time to reset the error warning. If the error warning comes back, do a test with a different battery.
		Overcurrent	Do a check of the cable harness to see if there is a short circuit. Replace the cable harness if it is necessary. Refer to <i>To remove and install the wiring assembly on page 26</i> .
			Do a check of the motor to see if there is a short circuit. Replace the motor if it is necessary. Refer to <i>To remove and install the motor on page 30</i> .
		The power trigger is engaged when the product starts.	Release the power trigger and start the product.
	The indicator is on.	The control unit is damaged.	Replace the control unit, refer to <i>To remove and install the control unit on page 25</i> . Use the spare part change flow in the Husqvarna Service Hub.
3	All 4 indicators flash.	The software is not loaded on the control unit.	Connect the product to the Husqvarna Service Hub and load the software on the control unit.
		The software is not loaded on the control panel.	Connect the product to the Husqvarna Service Hub and load the software on the control panel.
		The product does a Firmware Over-the-Air (FOTA) update.	Let the FOTA update finish.
2 and 3	Indicator no. 2 and the first LED on indicator no. 3 flash.	The battery level is low.	Charge the battery.
2 and 4	Indicator no. 2 flashes and indicator no. 4 is on.	Temperature deviation.	The product is too hot or too cold.

LED indicator	Indication	Cause	Solution
5	The indicator is on.	The RA 11 is not installed on the product.	Install the RA 11 on the product. Make sure that the RA 11 is correctly installed and tightened to the product.
	The indicator is on and the RA 11 is installed.	One clamp switch is damaged on one side.	Install the RA 11 on the other side.
	The indicator is on and the RA 11 has been installed on the left and the right side.	The two clamp switches are damaged.	Speak to an approved Husqvarna service center.

7 Maintenance

7.1 Maintenance schedule

* =Service done by Husqvarna approved service center.

X = Maintenance done by the operator.

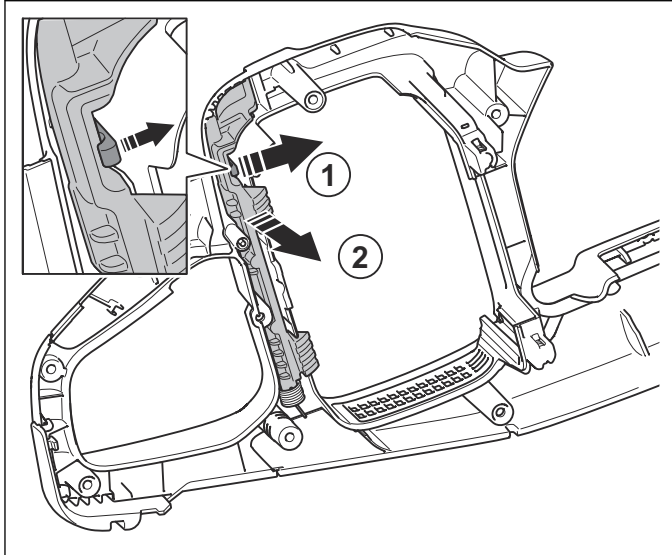
Maintenance	Before use	Monthly	Each 50 h
Clean the external parts of the product.	X		
Make sure that the power trigger and the power trigger lockout function correctly from a safety point of view.	X		
Do a check of the cutting blade. Look for cracks and make sure that the cutting blade is not unusually worn. Replace if necessary.	X		
Clean the fan housing on the product.	X		
Make sure that the screws and nuts are tight.	X		
Make sure that the control panel works correctly and that it is not damaged.	X		
Do a check of the connections between the battery and the product. Do a check of the connection between the battery and the battery charger.		X	
Blow through the product and battery soft with compressed air.		X	
Change the belt. Refer to <i>Drive belt on page 28</i> .			*
Clean the gearbox to remove grease. Apply new grease and install a new gas-ket.			*
Do a check of the gear wheels in gears box. Make sure that the gear wheels turn easily and has no wear.			*
Do a check of the gear wheels in gears box. Make sure that the gear wheels turn easily and has no wear.			*
Clean the heat sink of the control unit with a brush.			*
Clean the trigger magnet to remove metal filings. Only applicable for K 1 PACE RAIL.			*
Do a check of the cables and make sure that they are not damaged.			*
Make sure that all 3 anti-vibration elements are not damaged.			*
Do a check of the hose coupling and make sure that the filter is installed.			*

8 Repair instructions

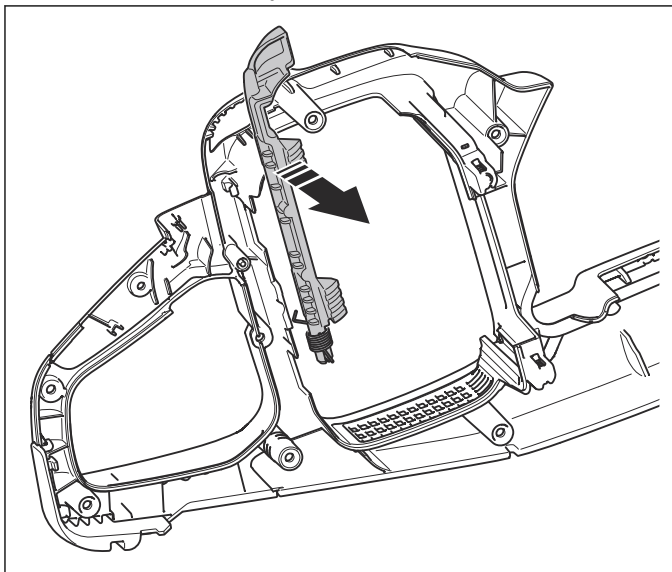
8.1 Handle half

8.1.1 To disassemble and assemble the handle half

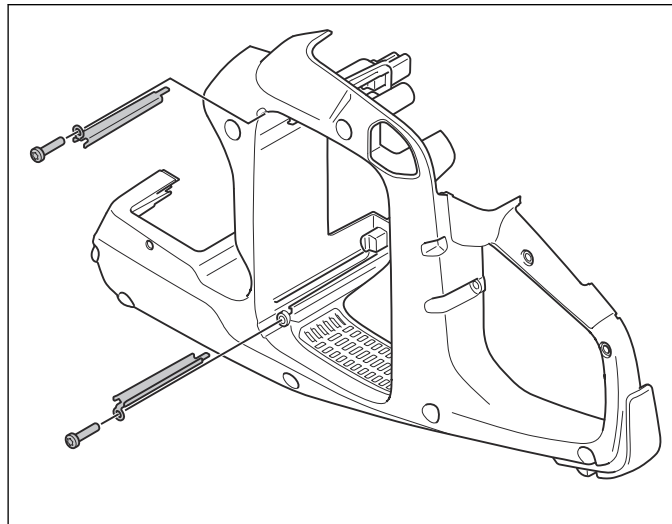
1. Remove the 10 screws and the left handle half.
2. Remove the battery release button from the locking clip.



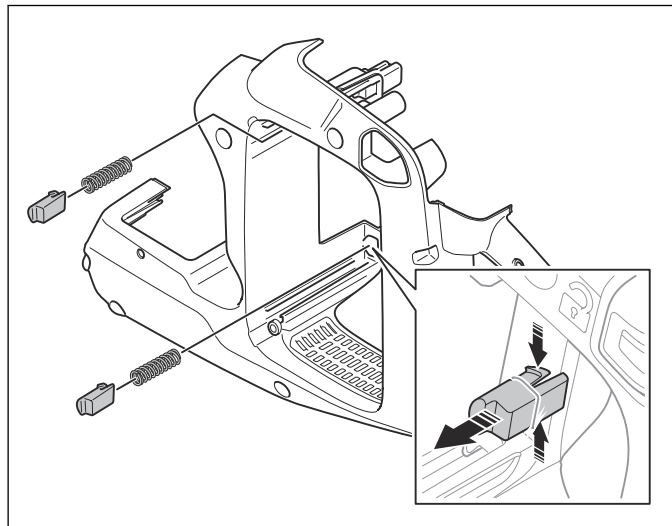
3. Remove the battery release button.



4. Remove the plate battery rails.



5. Remove the battery ejectors.



6. Assemble in the opposite sequence.

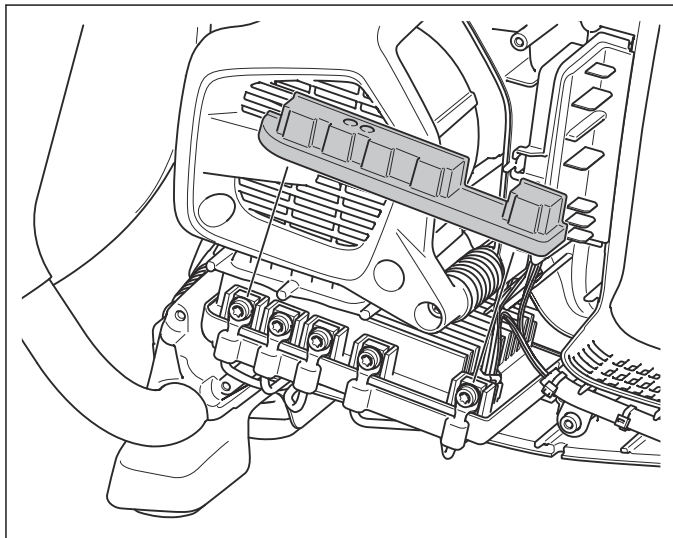
8.2 Control unit

8.2.1 To remove and install the control unit

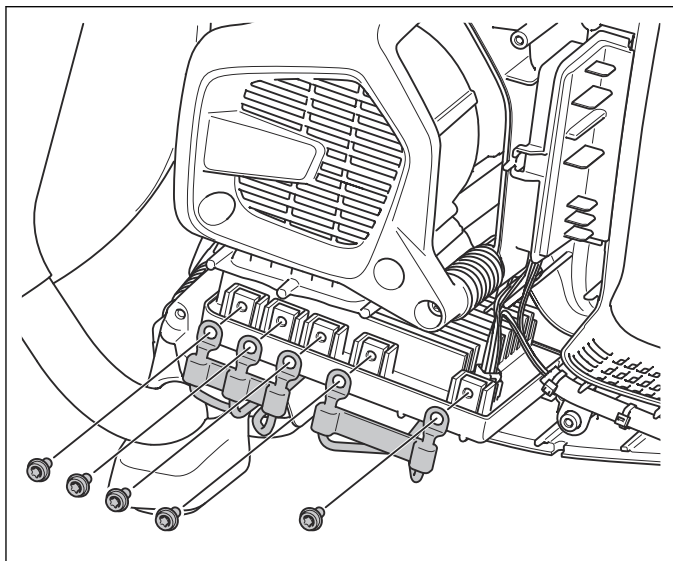


CAUTION: If you replace the control unit, download the software to it with CST/HSH.

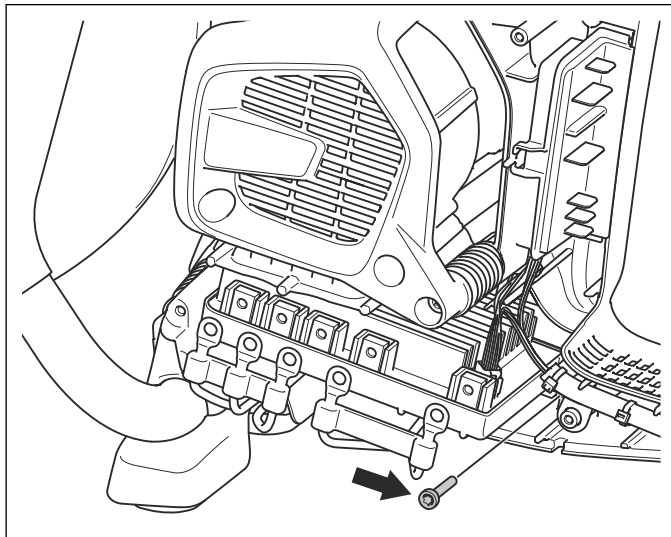
1. Remove the left handle half. Refer to *To disassemble and assemble the handle half on page 24.*
2. Remove the rubber cover.



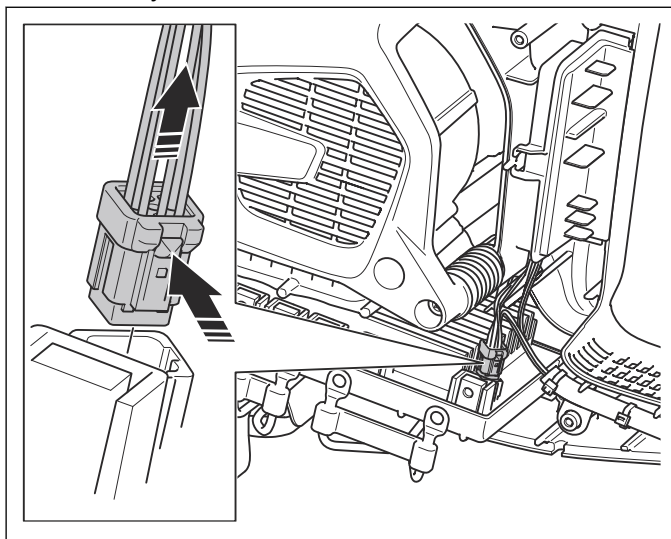
3. Remove the cable connectors.



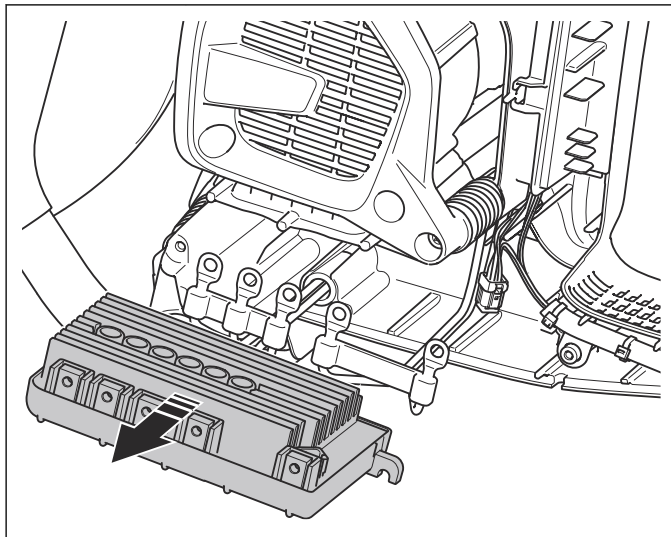
4. Remove the screw that holds the control unit.



5. Push in the locking clip and remove the wiring assembly.



6. Remove the control unit.

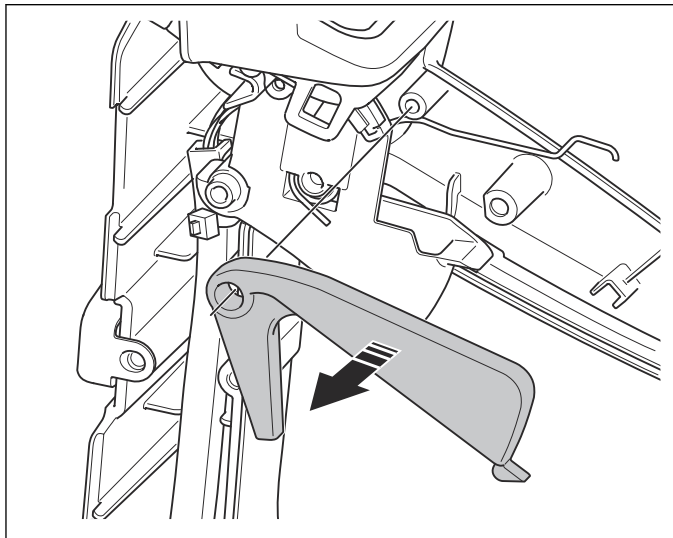


7. Assemble in the opposite sequence.

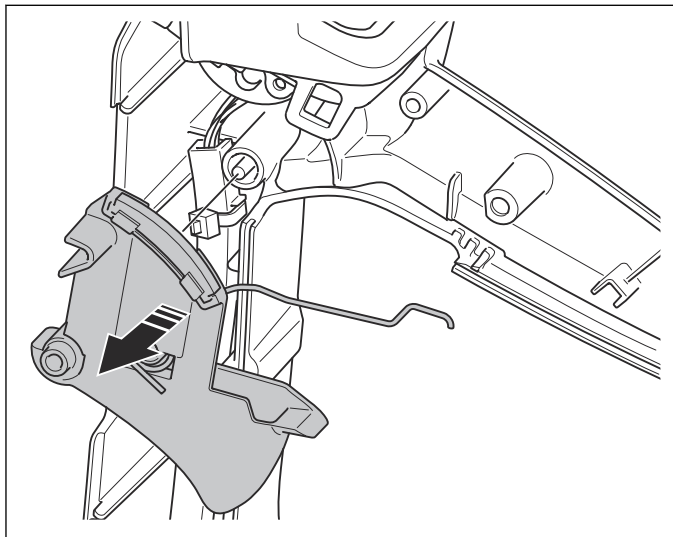
8.3 Power trigger and power trigger lockout

8.3.1 To remove and install the power trigger and the power trigger lockout

1. Remove the left handle half. Refer to *To disassemble and assemble the handle half on page 24*.
2. Remove the power trigger lockout.

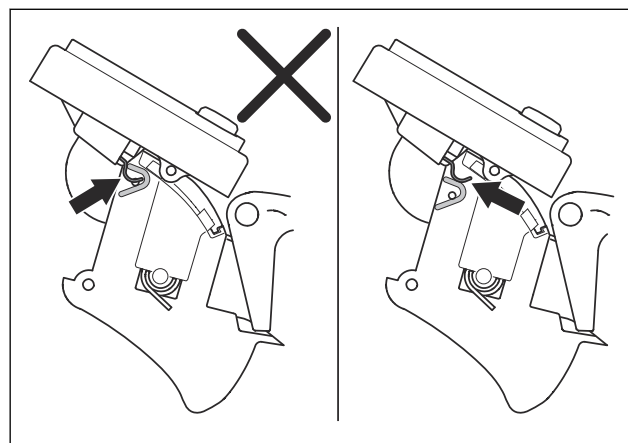


3. Remove the power trigger.



4. Install in the opposite sequence.

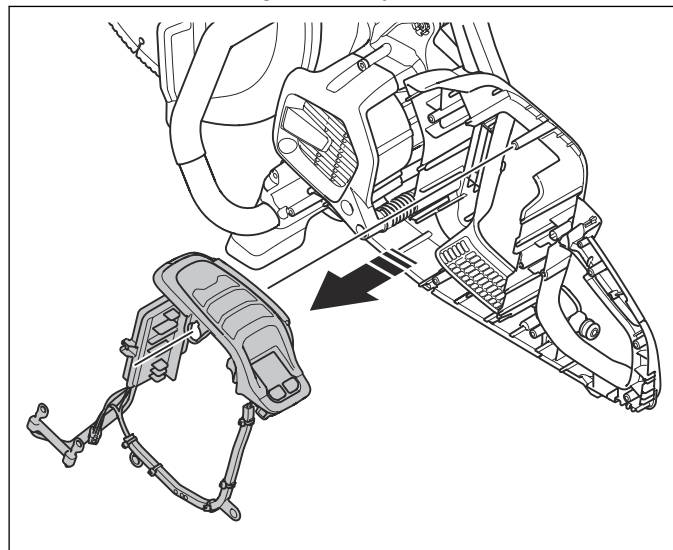
Note: Make sure that the microswitch lever on the control panel is above the power trigger.



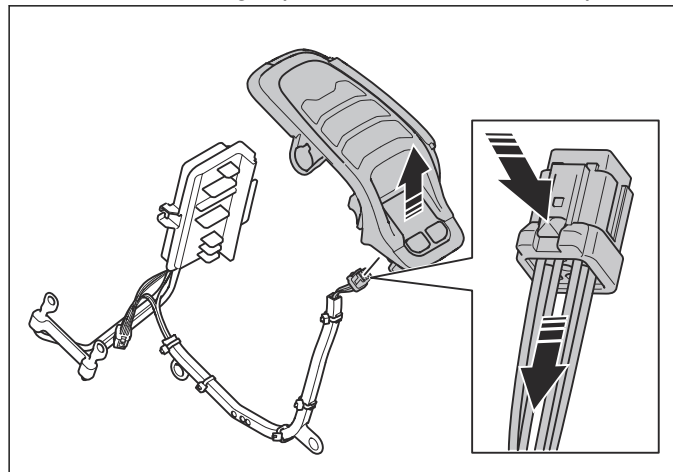
8.4 Wiring assembly

8.4.1 To remove and install the wiring assembly

1. Remove the left handle half.
2. Remove the control unit. Refer to *To remove and install the control unit on page 25*.
3. Remove the power trigger and power trigger lockout. Refer to *To remove and install the power trigger and the power trigger lockout on page 26*.
4. Remove the wiring assembly.



5. Push the locking clip and remove the control panel.

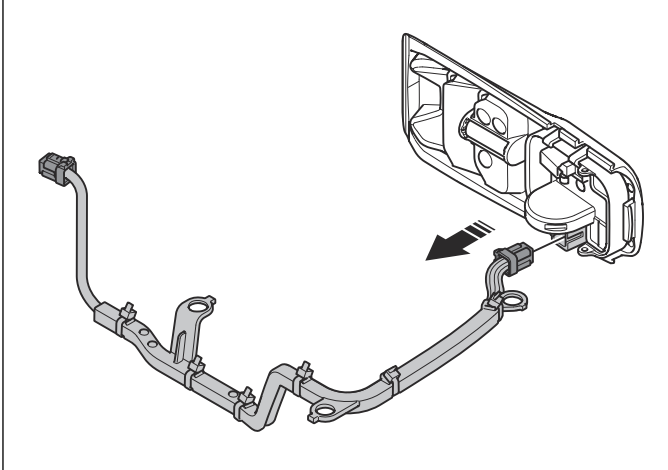


6. Install in the opposite sequence.

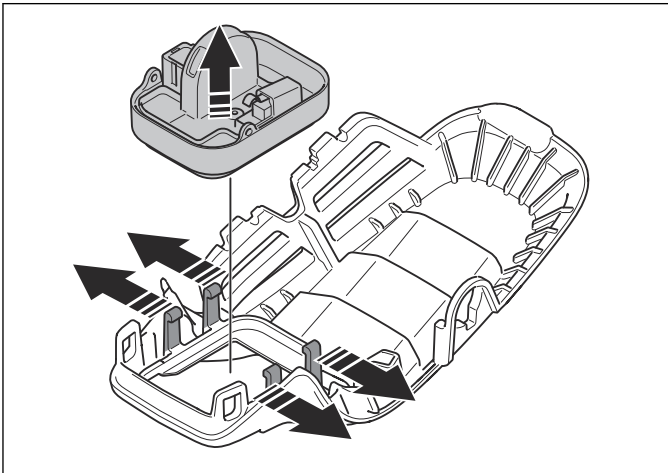
8.5 Control panel

8.5.1 To remove and install the control panel

1. Remove the left handle half. Refer to *Product overview on page 15*.
2. Remove the power trigger. Refer to *To remove and install the power trigger and the power trigger lockout on page 26*.
3. Remove the connector from the wiring assembly.



4. Pull out the locking clips and remove the control panel.

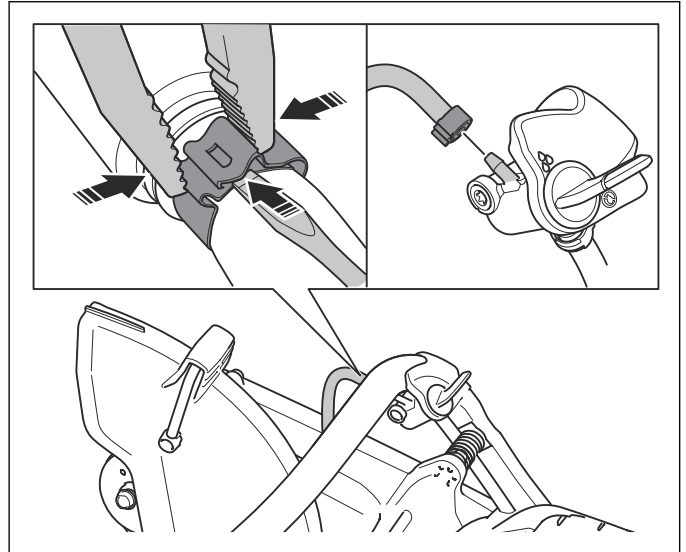


5. Install in the opposite sequence.

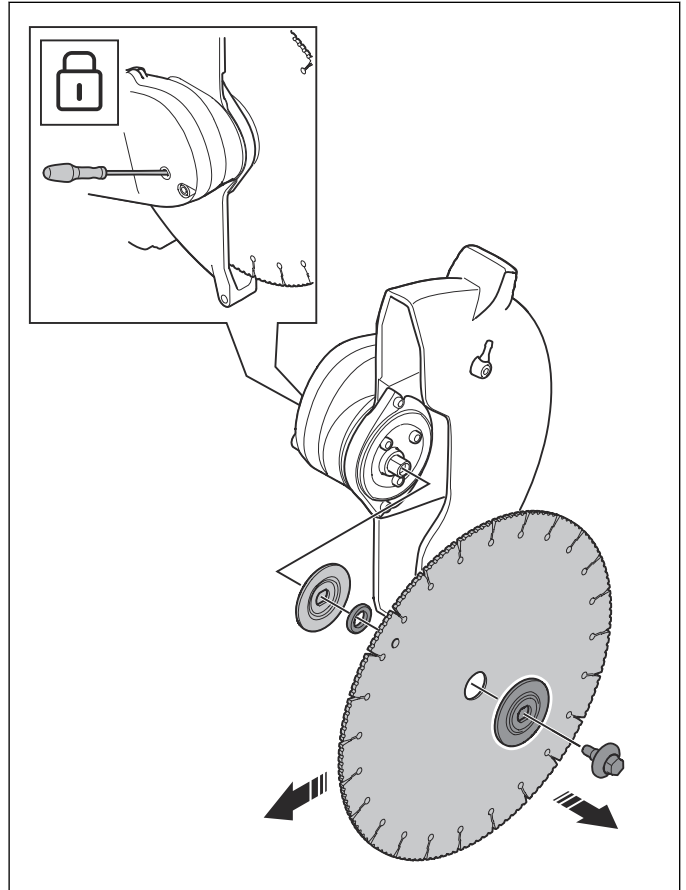
8.6 Blade guard

8.6.1 To disassemble and assemble the blade guard

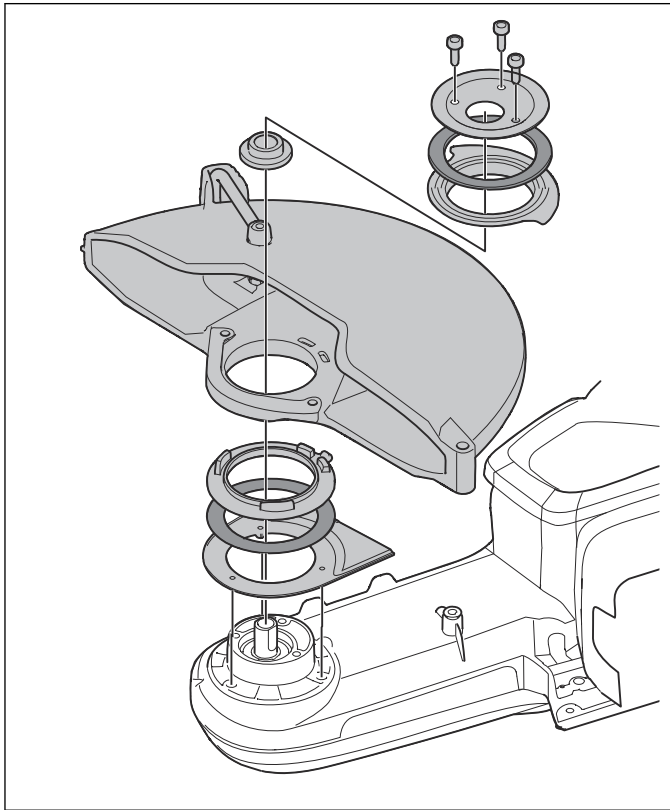
1. Remove the hose from the water valve.



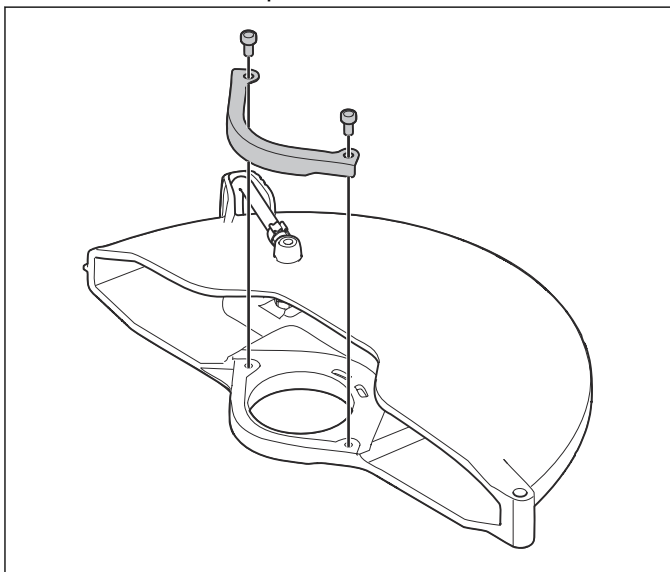
2. Remove the cutting blade from the blade guard.



3. Loosen the screws. Remove the blade guard, seals, spacer and screen rings.



4. Remove the wear protection.

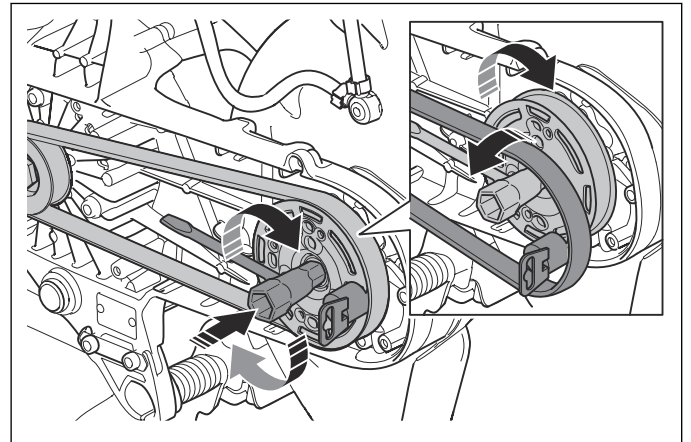


5. Assemble in the opposite sequence.

8.7 Drive belt

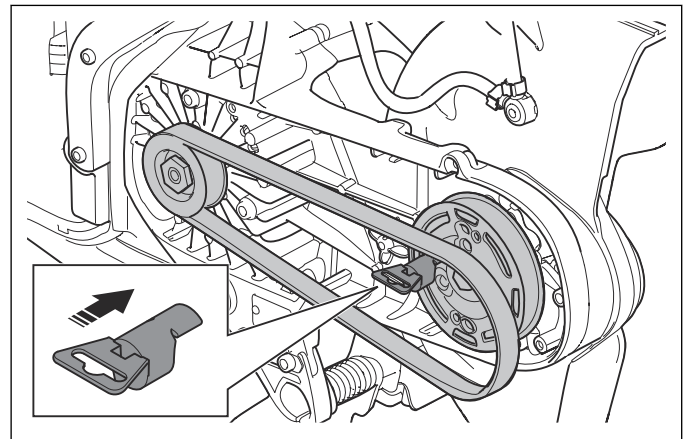
8.7.1 To remove the drive belt

1. Remove the belt guard. Refer to *Product overview on page 15*.
2. Put the belt tool on top of the front pulley. Use a wrench to pull the drive belt off the pulley.

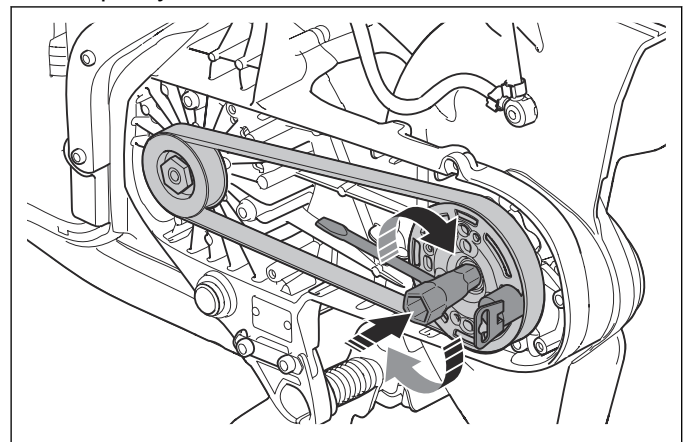


8.7.2 To install the drive belt

1. Put the drive belt around the rear pulley.
2. Put the belt assembly tool on top of the front pulley.



3. Turn the front pulley clockwise with the combination wrench. At the same time, push the drive belt onto the pulley.

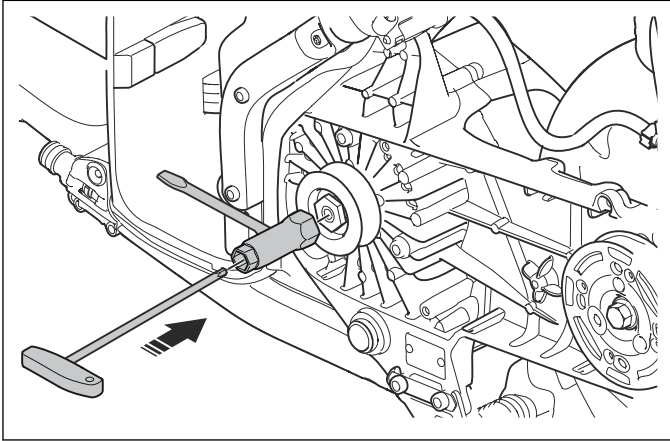


4. Attach the belt guard. Refer to *Product overview on page 15*.

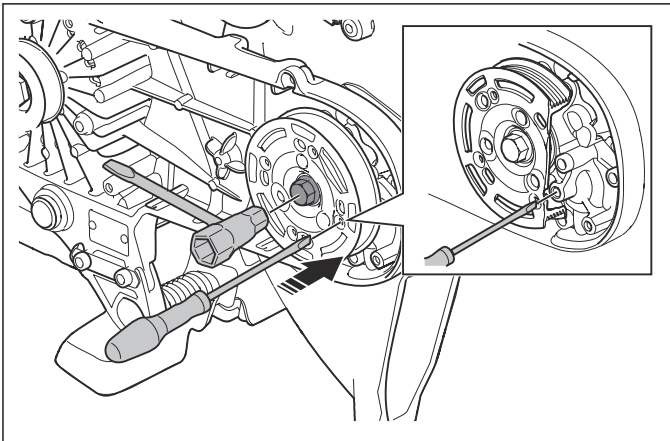
8.8 Pulleys

8.8.1 To remove and install the pulleys

1. Remove the belt guard. Refer to *Product overview on page 15*.
2. Remove the drive belt. Refer to *To remove the drive belt on page 28*.
3. Lock the motor shaft with a combination wrench and loosen the pulley screw with a torx key.



4. Lock the blade shaft with a screwdriver and loosen the pulley screw with a combination wrench.



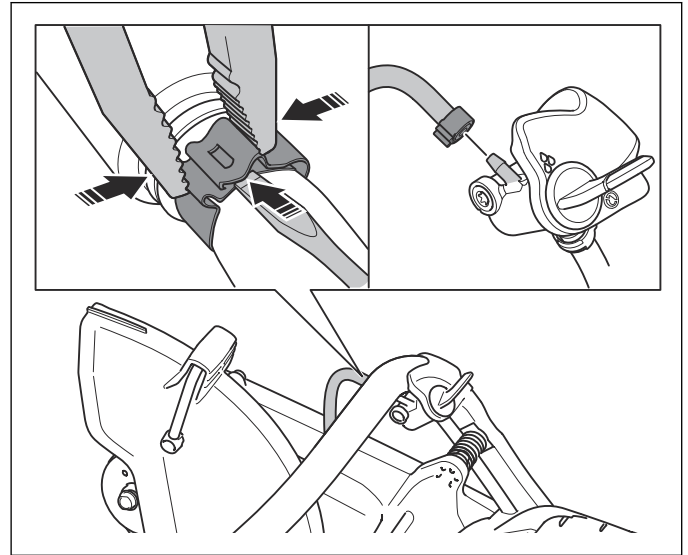
5. Install in the opposite sequence.

8.9 Cutter arm

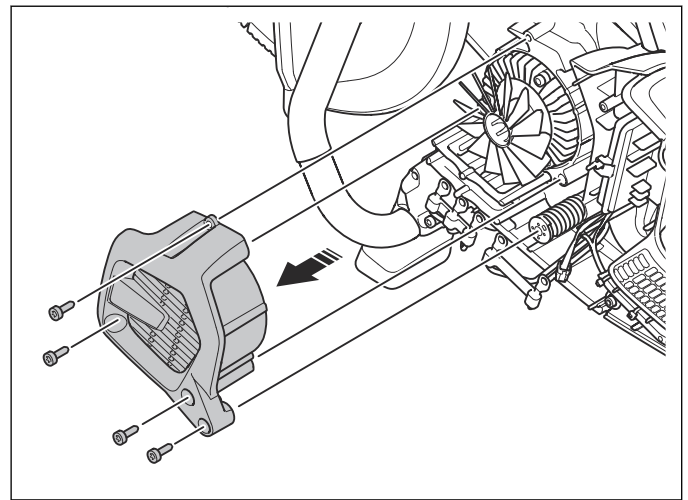
8.9.1 To remove and install the cutter arm

1. Remove the left handle half.
2. Remove the control unit. Refer to *To remove and install the control unit on page 25*

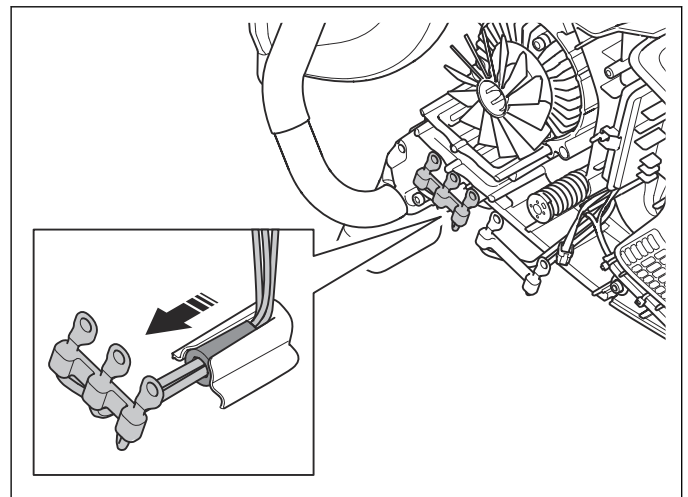
3. Remove the hose from the water valve.



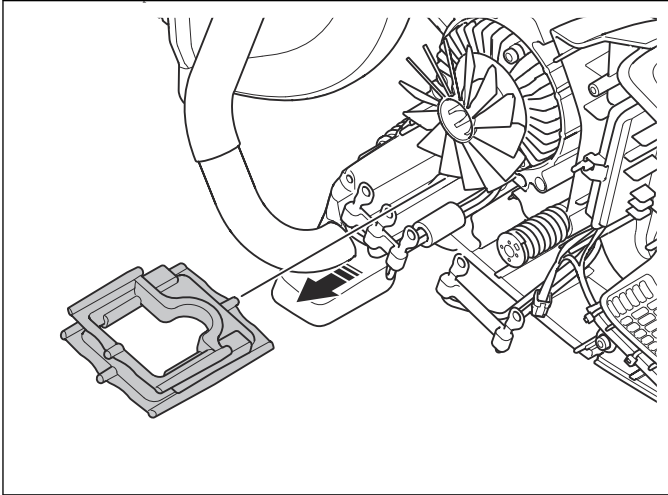
4. Remove the motor cover.



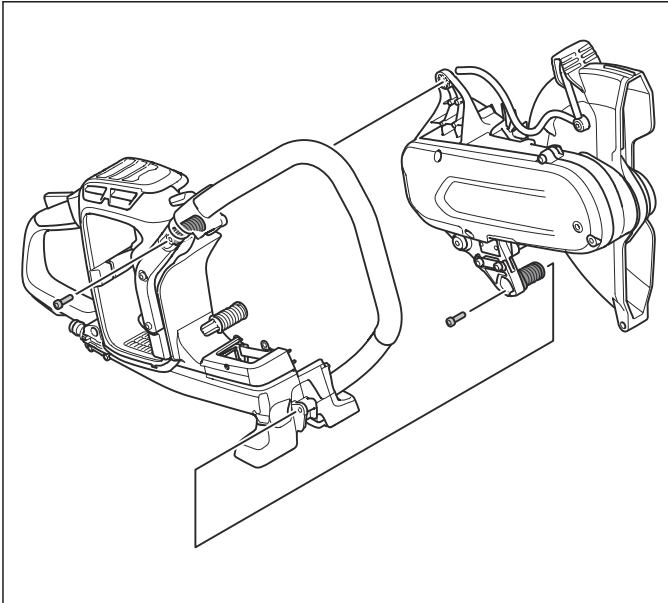
5. Loosen the socket for the motor cables.



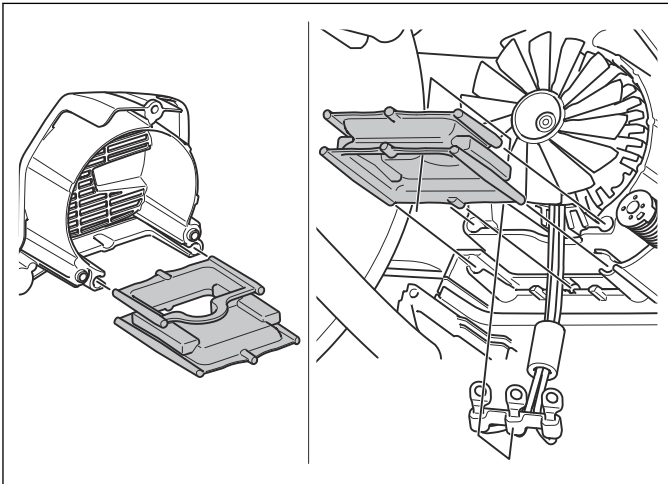
6. Remove the grommet.



7. Remove the cutter arm, blade guard and motor.



8. Install in the opposite sequence.



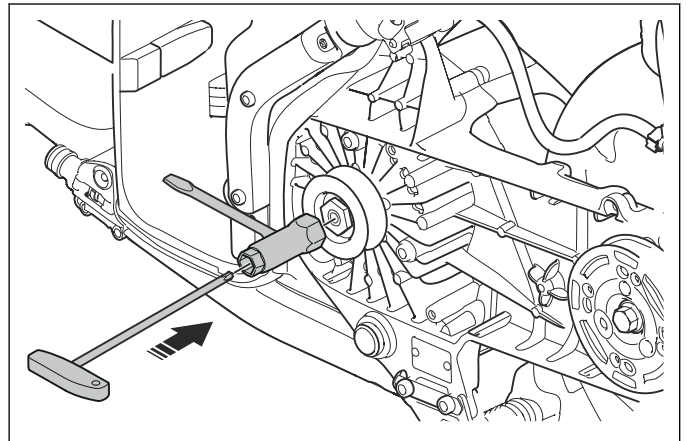
Note: The grommet makes the air from the fan go to the circuit board and the battery. Make sure that the grommet is installed correctly.

Note: Make sure that the cables go through the grommet.

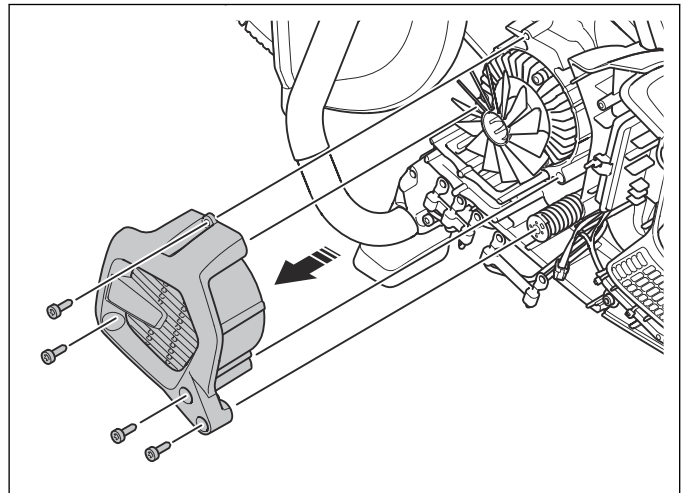
8.10 Motor

8.10.1 To remove and install the motor

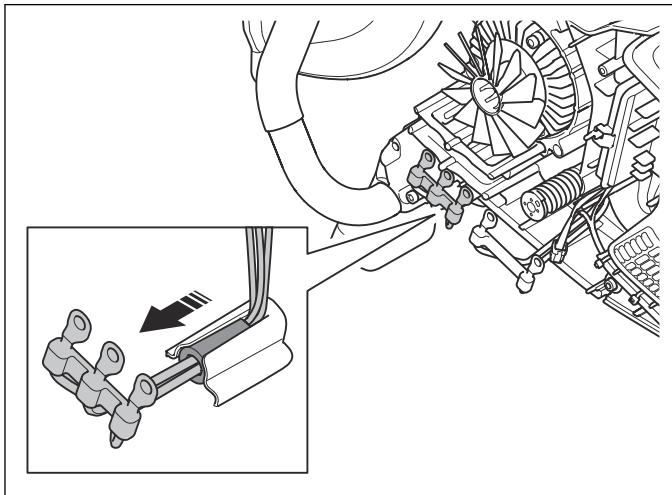
1. Remove the left handle half. Refer to *To disassemble and assemble the handle half on page 24*.
2. Remove the control unit. Refer to *To remove and install the control unit on page 25*.
3. Remove the belt guard. Refer to *Product overview on page 15*.
4. Remove the drive belt. Refer to *To remove the drive belt on page 28*.
5. Lock the motor shaft with a combination wrench and loosen the pulley screw with a torx key.



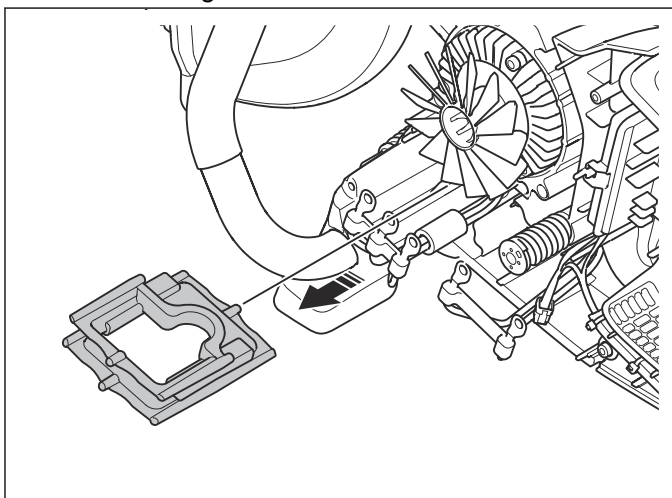
6. Remove the motor cover.



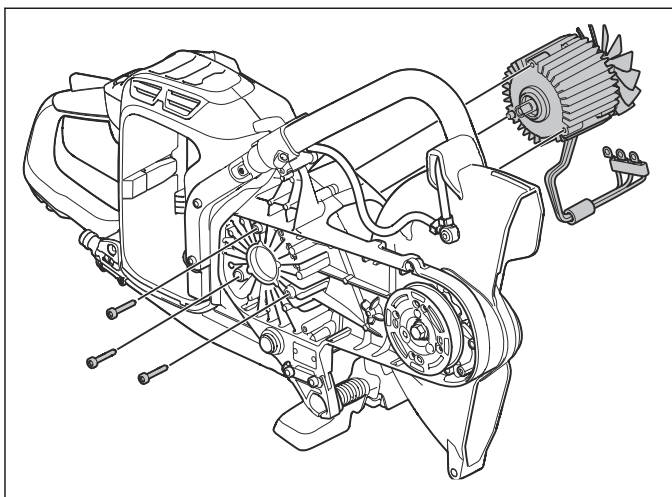
7. Loosen the socket for the motor cables.



8. Remove the grommet.



9. Remove the motor.



10. Install in the opposite sequence.

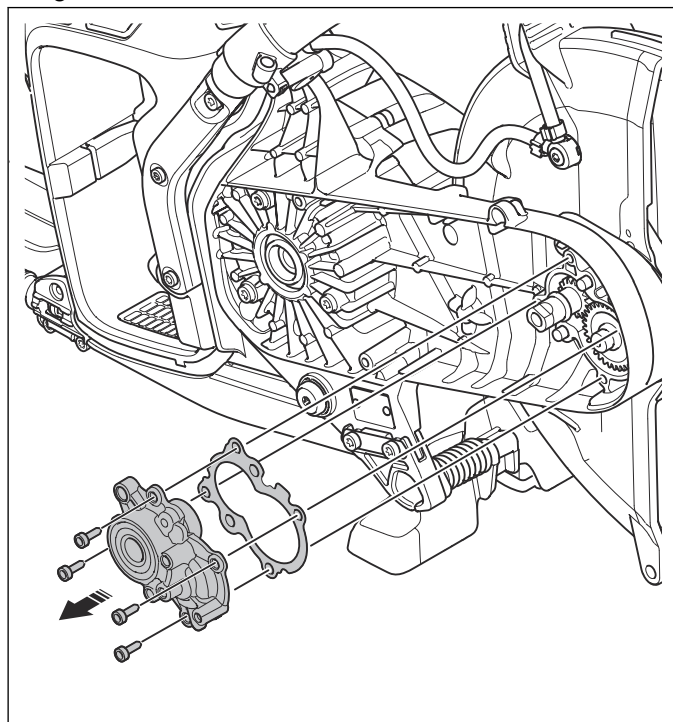
8.11 Gearbox

8.11.1 To remove and install the gears

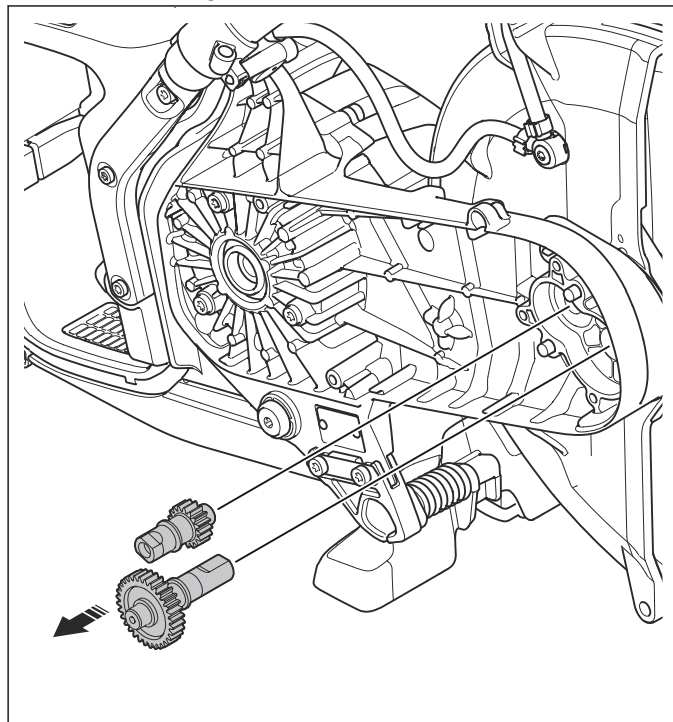
1. Remove the belt guard. Refer to *Product overview on page 15*.
2. Remove the drive belt. Refer to *To remove the drive belt on page 28*.

3. Remove the front pulley wheel. Refer to *To remove and install the pulleys on page 29*.

4. Remove the gearbox lid and gasket. Discard the gasket.



5. Remove the gears.



6. Install in the opposite sequence.

Note: Install a new gasket.

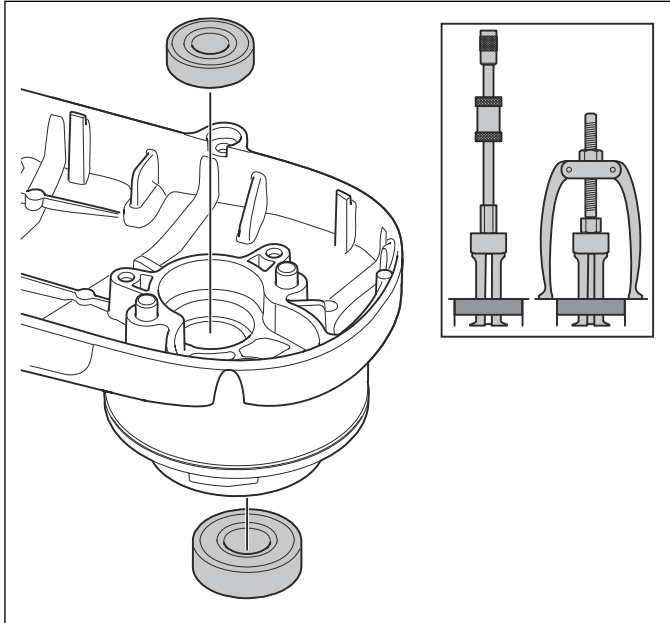


CAUTION: Apply grease to the gearbox. Refer to *To apply grease to the gearbox on page 33*.

8.11.2 To remove the bearings

Note: The cutter arm is sold with the bearings installed.

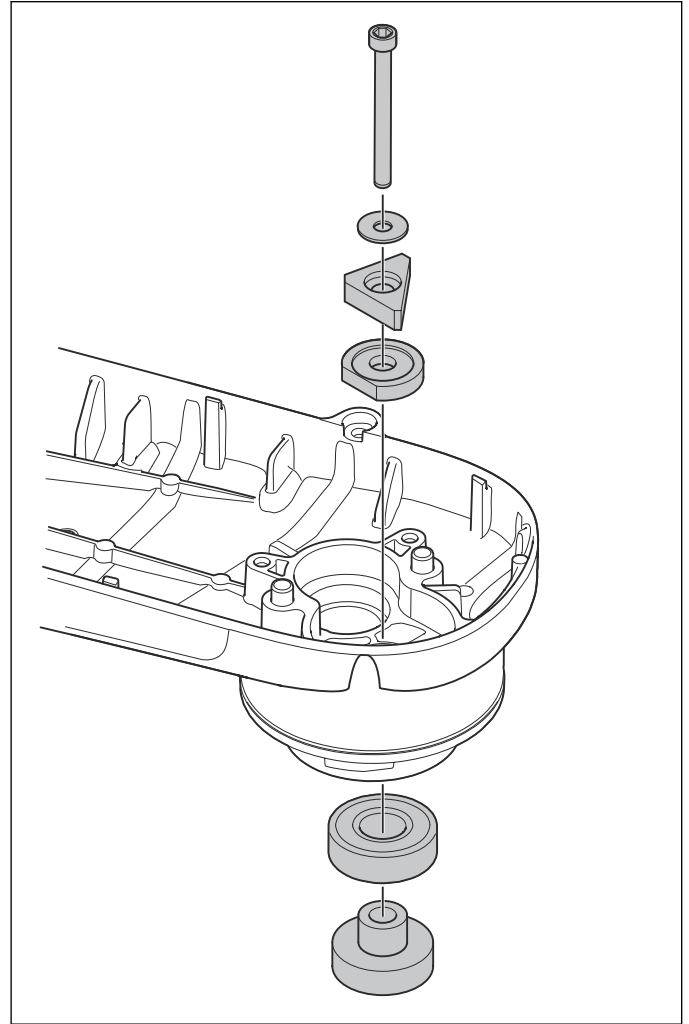
1. Remove the gears. Refer to *To remove and install the gears on page 31*.
2. Remove the blade guard. Refer to *To disassemble and assemble the blade guard on page 27*.
3. Remove the bearings with a counter stay device or a slide hammer and internal bearing extractor. Refer to *Servicing tools overview on page 14*.



Do not remove the bearings from the lid. They are supplied with the lid as a kit.

8.11.2.1 To install the blade shaft bearing with a Husqvarna bearing press

1. Install the Husqvarna bearing press. Tighten the screw.



2. Tighten the screw.

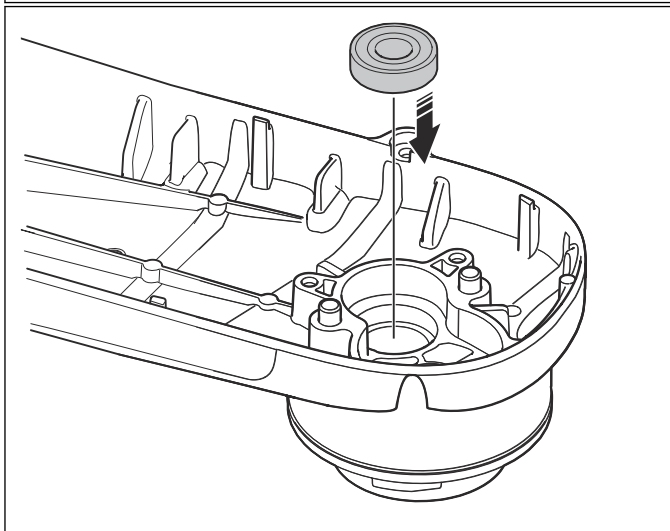
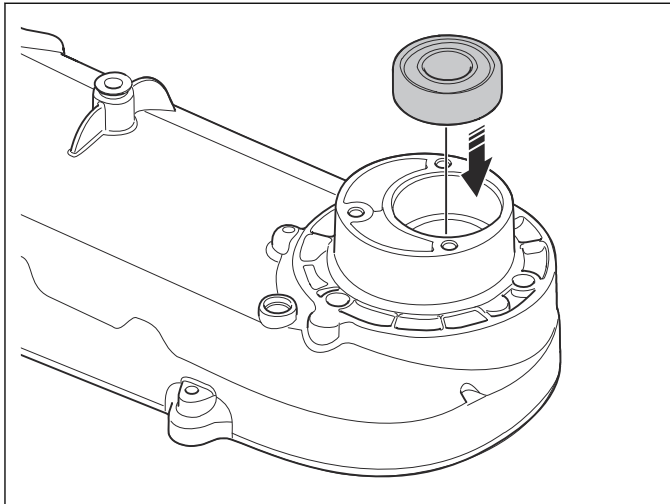


CAUTION: Apply grease to the gearbox. Refer to *To apply grease to the gearbox on page 33*.

8.11.2.2 To install the bearings with a standard press

Make sure the cutter arm is level.

- Push the blade shaft bearing. Use a mandrel with diameter 32 - 34 mm.



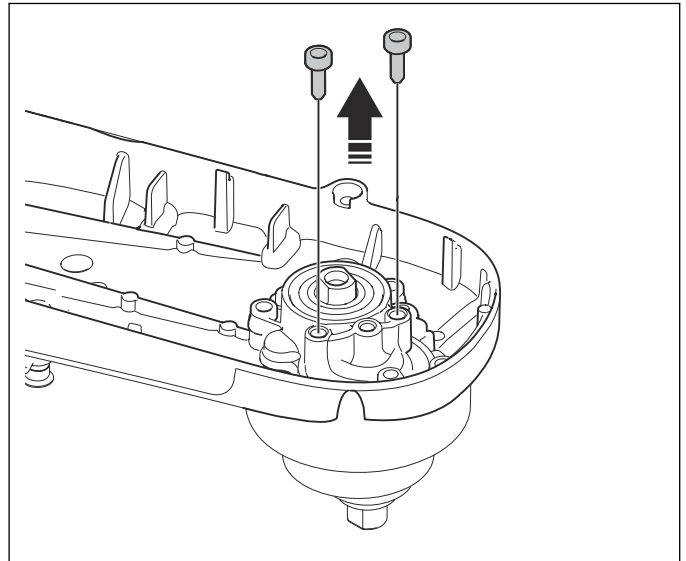
CAUTION: Apply grease to the gearbox. Refer to *To install the bearings with a standard press on page 33.*

8.11.3 To apply grease to the gearbox

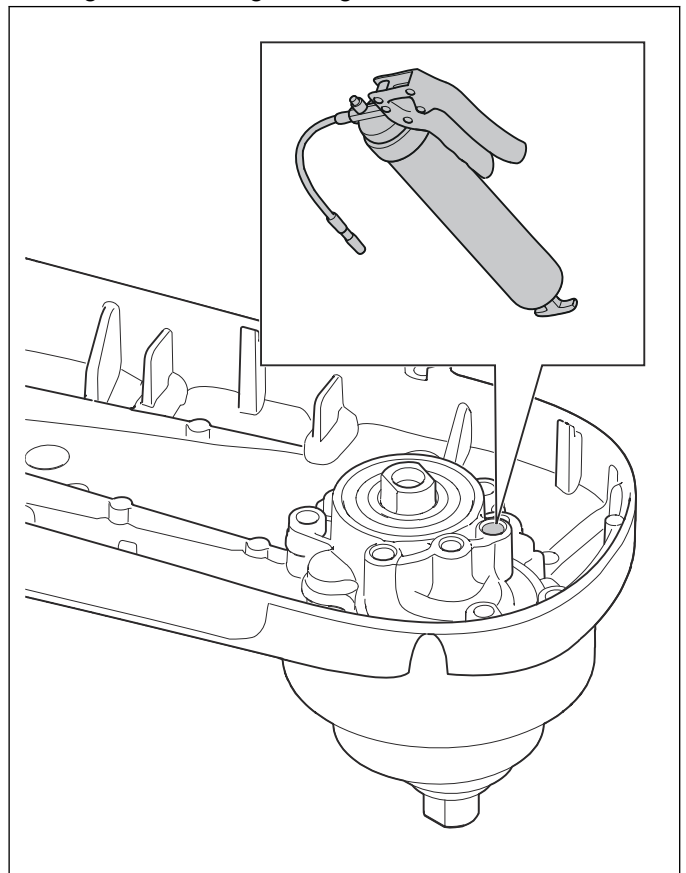


CAUTION: Always apply grease to the gearbox after you have opened it.

1. Remove the 2 screws.



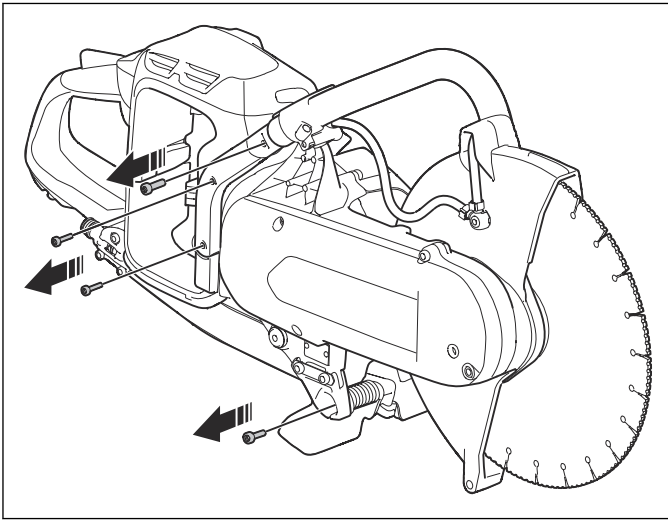
2. When the gearbox is clean and empty, apply 18 ml of grease with a grease gun.



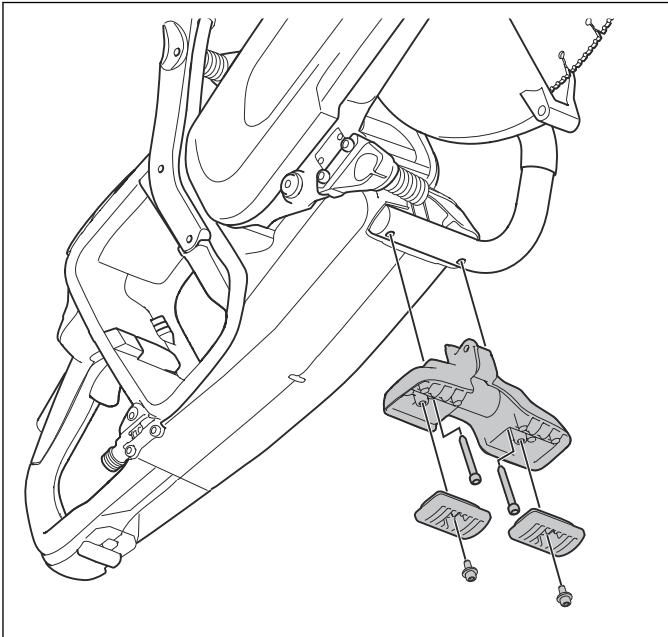
8.12 Front handle

8.12.1 To remove and install the front handle

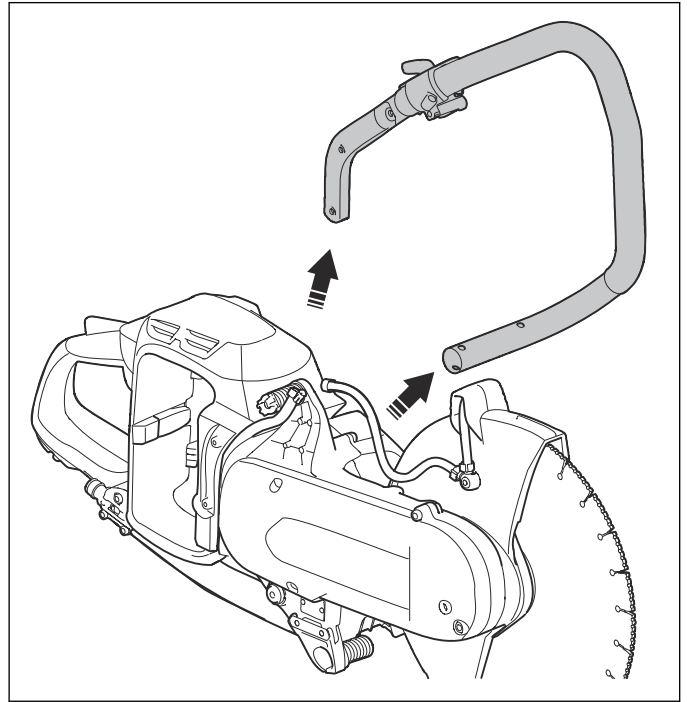
1. Remove the hoses from the water valve. Refer to *Product overview on page 15*.
2. Remove the screws for the handle and the ground support.



3. Remove the wear protection and the screws for the ground support.



4. Remove the front handle.

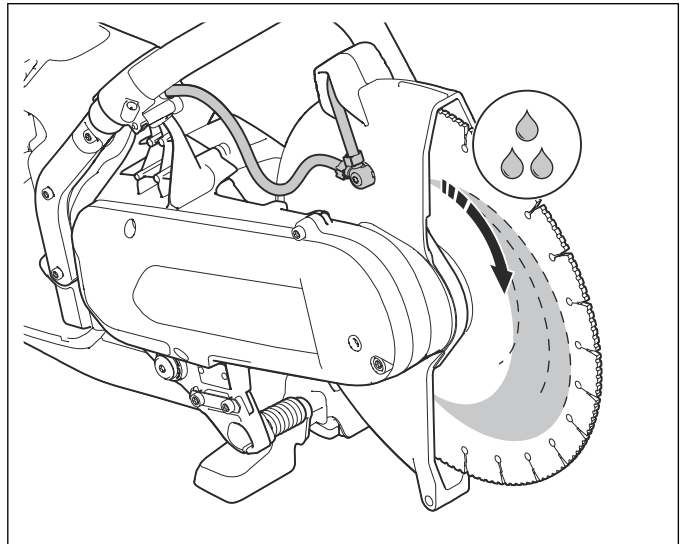


5. Assemble in the opposite sequence.

8.13 Wet system

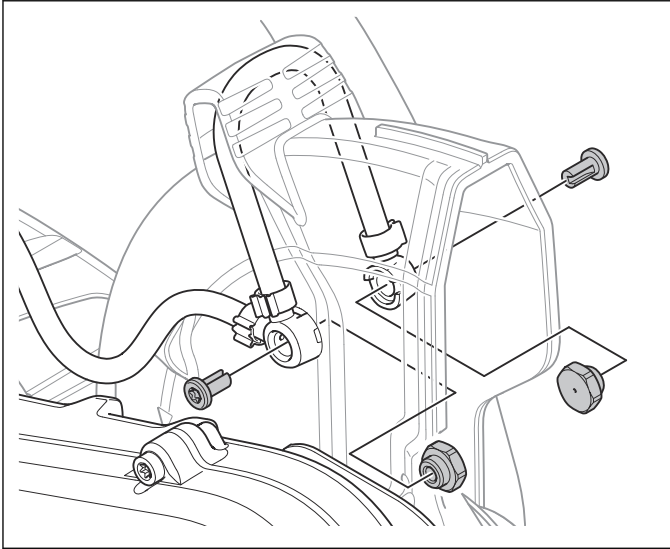
8.13.1 Function

Each side of the blade guard has a spray nozzle. The water hits a section of the cutting blade and the centrifugal force moves it out to the edge.

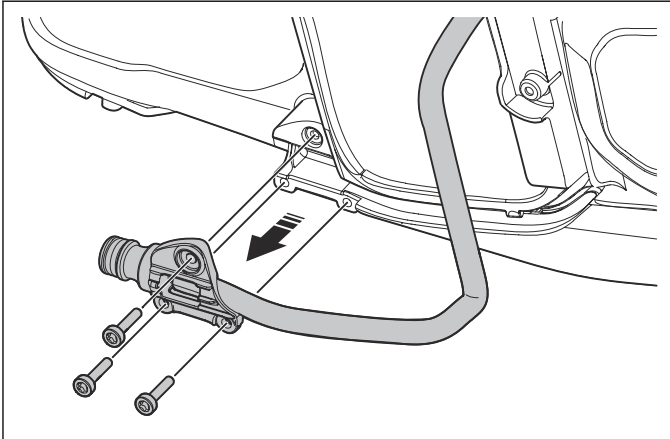


8.13.2 To remove the wet system

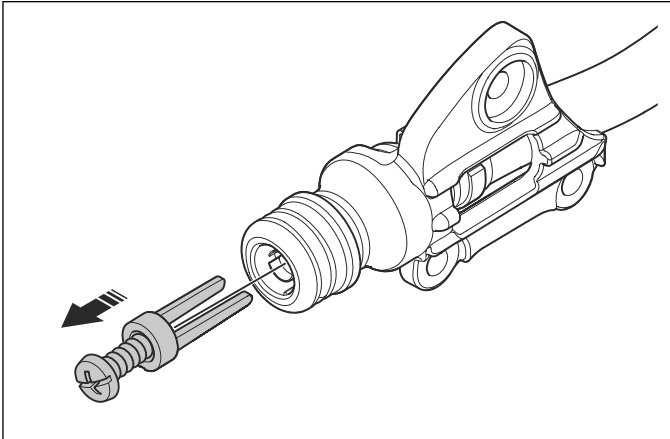
1. Remove the front handle. Refer to *To remove and install the front handle on page 34*.
2. Remove the screws that hold the spray nozzle.



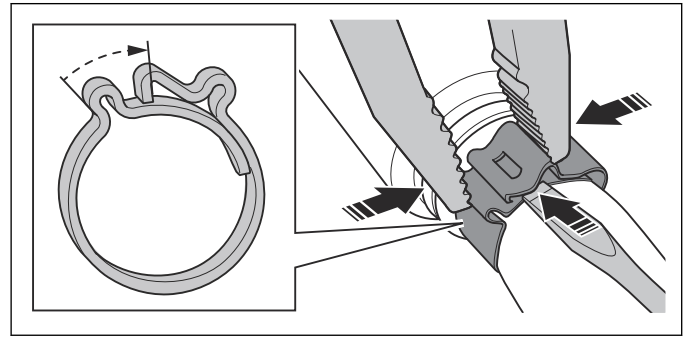
3. Remove the water connector assembly.



4. Remove the filter with a wood screw.

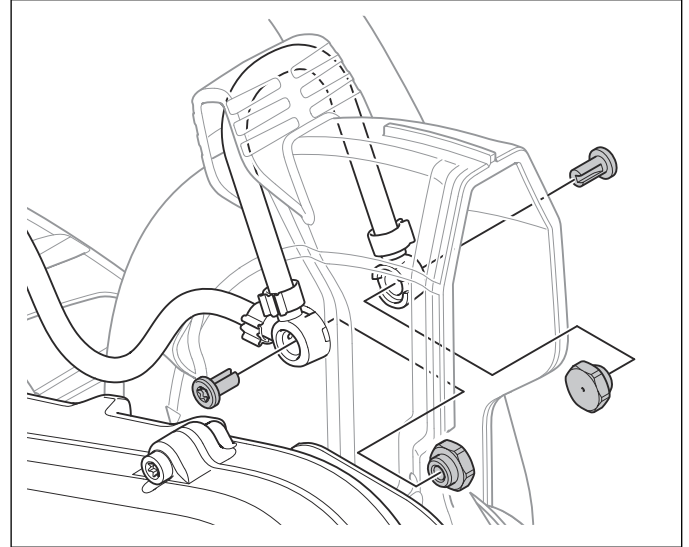


5. Open the hose clip with a screwdriver and a pair of pliers.

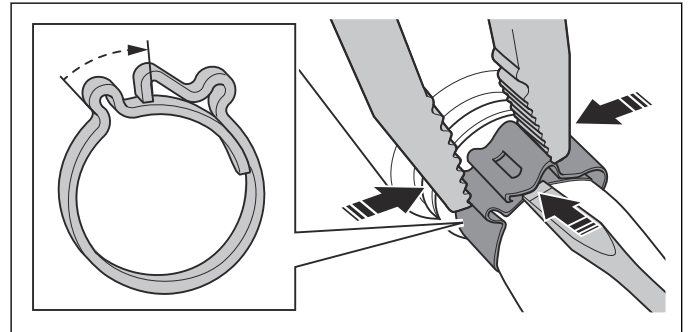


8.13.3 To install the wet system

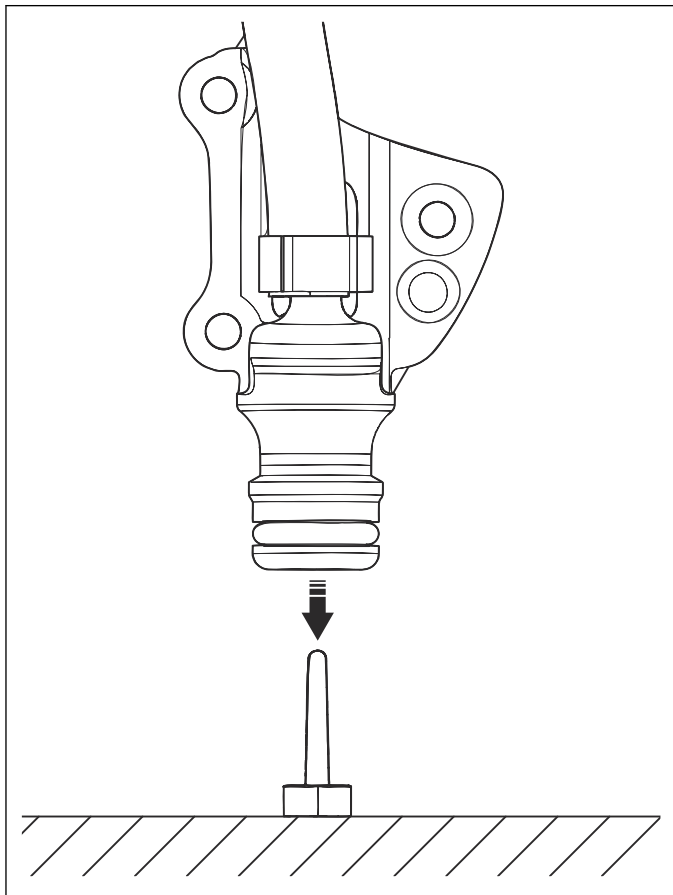
1. Install the spray nozzles on the blade guard.



2. Install a new hose clip and close it with a pair of pliers.

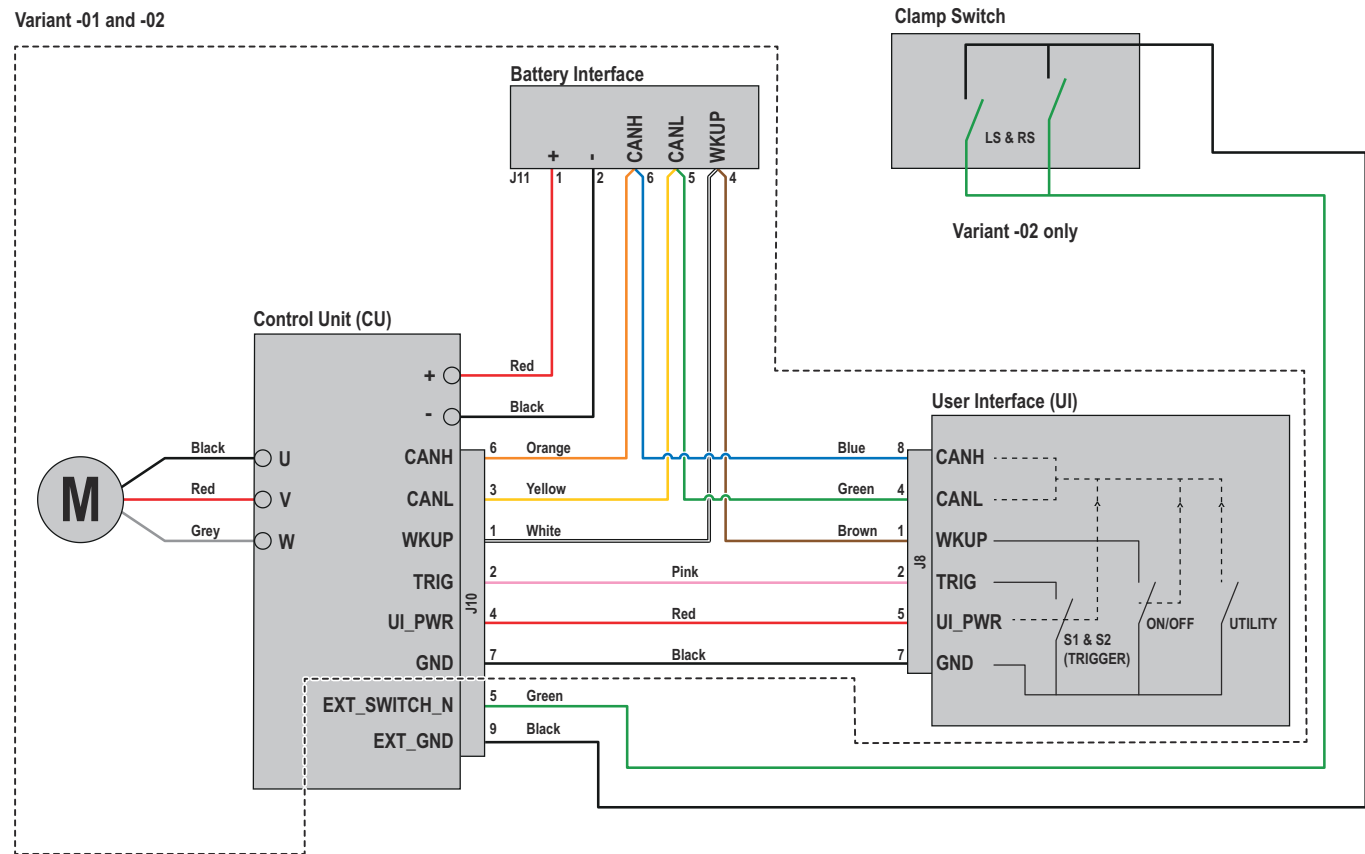


3. Put the filter on a flat surface and push the connector onto the filter.



9 Diagrams

9.1 Wiring diagram





www.husqvarna.com

596432406

2023-07-05