

Overhead Wire

Mobile Elevated Work Platform Hi-Rail – ART17THM



Features

- 400kg Basket Capacity
- Continuous 360° Turret Rotation
- 8.94m outreach with telescopic arm fully extended
- Multigauge 1067-1600 (options available in Single, Multi and Tri-Gauge)
- Full stability on 180mm cant in work mode and 200mm cant in travel mode
- Travels over the side at 90° at a 120mm on various cants, depending on gauge, working at all times with a full load of 400kg
- Pantograph measures and records Height and Stagger measurements while on the move
- Onboard control panel with Pantograph in working mode

Height & Stagger Gauge

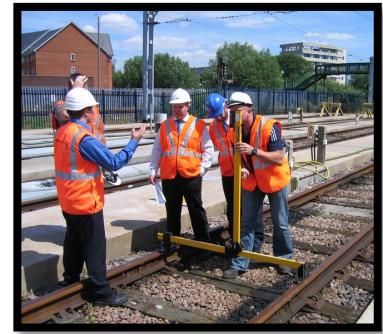
Part No. **ABT4640-1067**

Part No. **ABT4640-1435**

Part No. **ABT4640-1600**

Safely measures the Height & Stagger of overhead lines (OHL).

Also measures Super-Elevation and Rail Edge to Face of Structure (REFOS).



Laser Offset Gauge

Part No. **ABT4610-1067**

Part No. **ABT4610-1435**

Part No. **ABT4610-1600**

Measures height & distance offset readings from the running rails to a desired object or structure.

Measuring capabilities include Platforms, Datum Plates, REFOS, OHL, Tunnel Clearance, Signals.



Ratcheting Cable Cutter (KLEIN TOOLS)

Part No. **KL-63607**



Wire Pulling Grips (KLEIN TOOLS)

Part No. **KL-1656-50**

Chicago Grip for Bare Wire 0.7" (17.78 mm) to 0.8" (20.32 mm)



Part No. **KL-1684-5F**

Grip for High Strength Cable sizes from 0.16" (4.06 mm) to 0.55" (13.97 mm)



Part No. **KL-1684-5H**

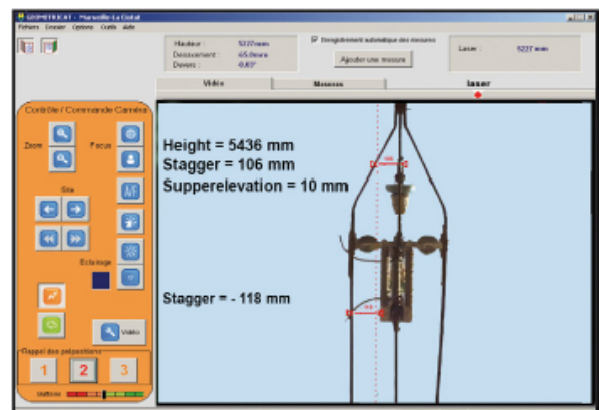
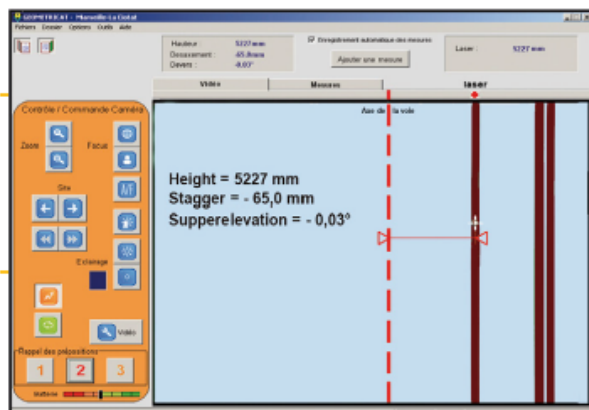
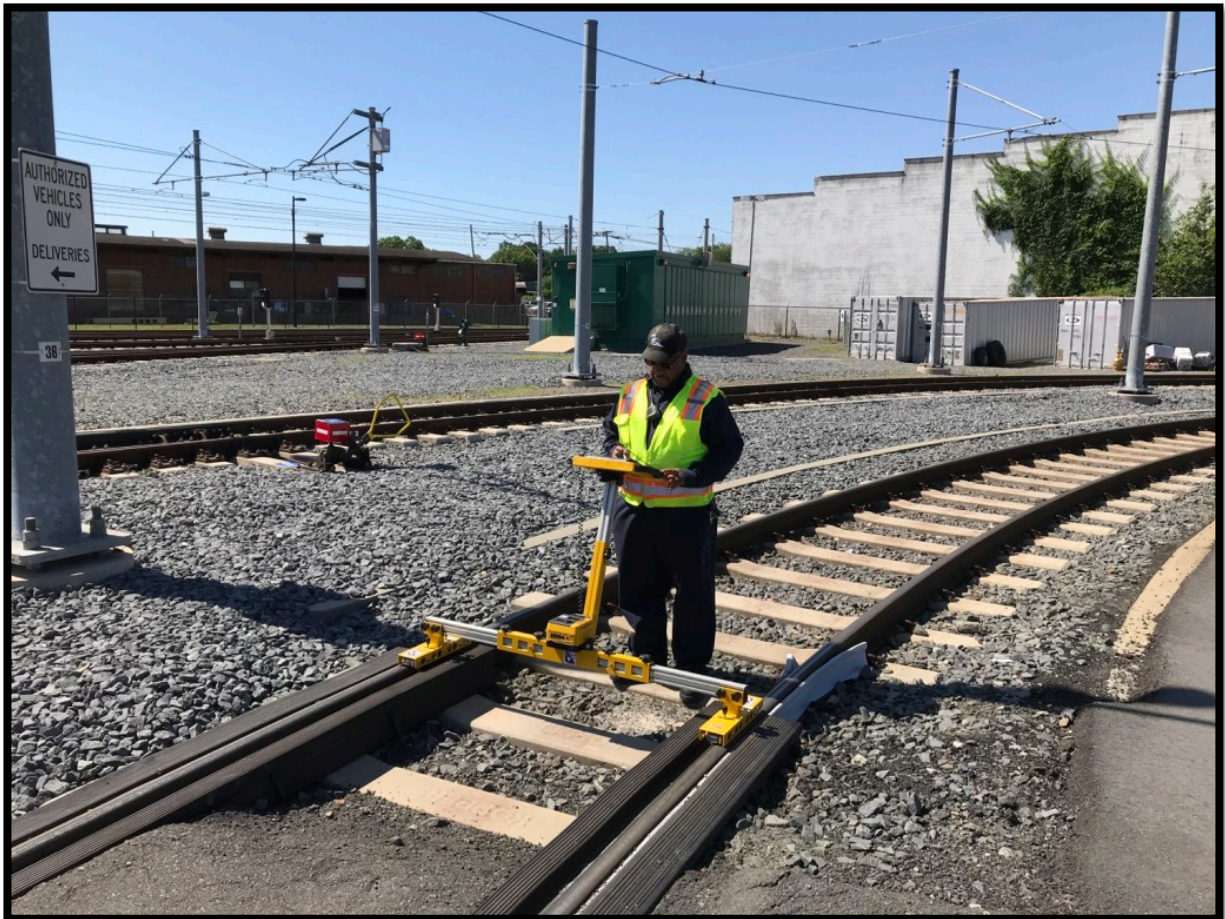
Chicago Grip with Latch 0.37" cable



KLEIN Tools – other products available on request

HDD-E – Camerov

Measures Height, Stagger, Cant and Track Gauge.



Visiocat Las'Cat – Camerov

Catenary and Electric Traction installation inspection equipment.

View all inaccessible points by video.



Measures the height of the contact wire (accuracy ± 10 mm) and the thickness of the contact wire (accuracy ± 10 mm).

Measures pulleys, counterweights, catenary brackets and arms, side faces of posts, tubing, height differences in switches, height and length of the line bracket, supports, isolation distance under bridges and tunnels, catenary gauge in section, distance of spacing between post face to face.

Inspection Reports contain editing wizard and multimedia on editing



Support number :	Mileage : 0.000	PICTURE : 8
Wire : Single	Measure point : Support	
Cant : 24 mm	Height = 5878 mm Stagger = -107 mm Cant = 24 mm	
Height : 5878 mm		
Stagger : -107 mm		
Lateral pointing : 3686 mm		

