



Spare Parts List



Ironman (Standard and LUL)

Permaquip Ltd
Level 3 Universal House, 41 Catley Road,
Darnall, Sheffield, S9 5JF, UK
Tel: +44 (0) 114 291 1020
Fax: +44 (0) 114 261 8186
E-mail: sales@permaquip.co.uk
www.permaquip.co.uk

CONTENTS

1. Issue and Revision Record	3
2. Introduction	4
3. Safe and Correct Use	4
4. Assembly Parts	5
4.1 Main Assemblies.....	5
4.2 Un-braked End Frame Assembly Parts	6
4.3 Braked End Frame Assembly Parts.....	7
4.4 Lifting Handle Assembly Parts.....	8
4.5 Top Beam Assembly.....	9
4.5 Top Beam Assembly.....	9
5. Labels	13
6. Main Components and Assemblies	14

Please note

Whilst Permaquip Limited has taken every care in preparing this Spare Parts List it is intended as a technical guideline only. Save to the extent that there are statutory rights to the contrary, Permaquip accepts no liability in relation to any use or reliance made of any information in this Spare Parts List.

All information, illustrations and specifications in this Spare Parts List are based on the latest information available at the time of publication. The right is reserved to make changes at any time without notice.

Equipment operators and installers shall be responsible for ensuring that a safe working environment and safe systems of work are in place and in certain circumstances advice and permission from the controlling authority must be sought before any operation, installation or surveying work is carried out.

Permaquip™ is a trademark of Permaquip Ltd.
©2006 Permaquip Ltd.

2. INTRODUCTION

The Permaquip™ Ironman is designed to be used singularly or in pairs, for the lifting and transportation of rail lengths, or parts of points and crossings (P&C) from one location to another.

The Ironman can also be used to transpose rail from one side of the track to the other. Therefore by straddling the running rails, access to the four-foot, six-foot and cess is possible.

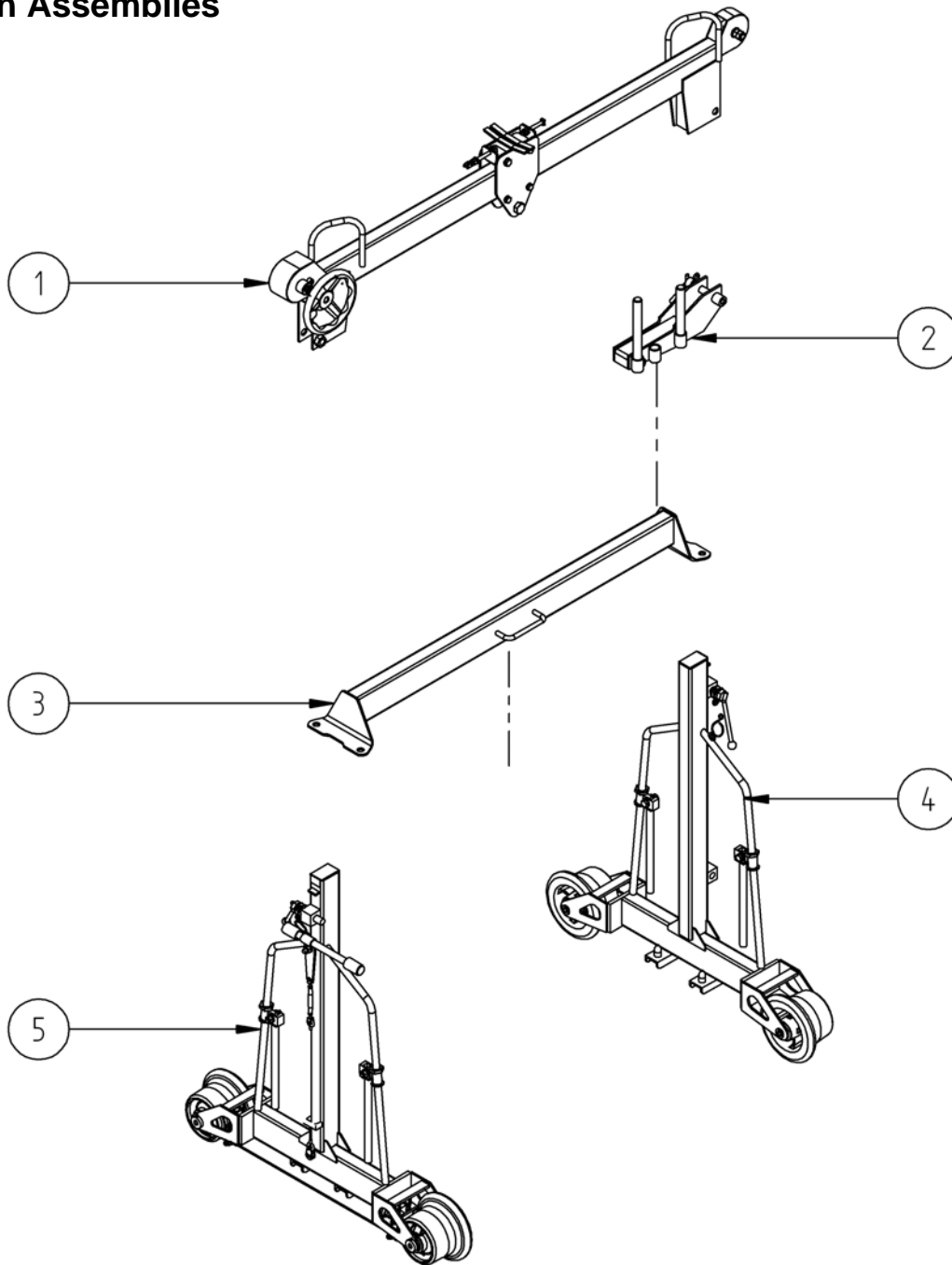
3. SAFE AND CORRECT USE

To ensure safe and correct use of the Permaquip™ Ironman please refer to the product's User Guide.

Once any maintenance, repair or service operations have been undertaken, ensure that the Maintenance and Test Specification of the product, as defined in the product's User Guide, are followed.

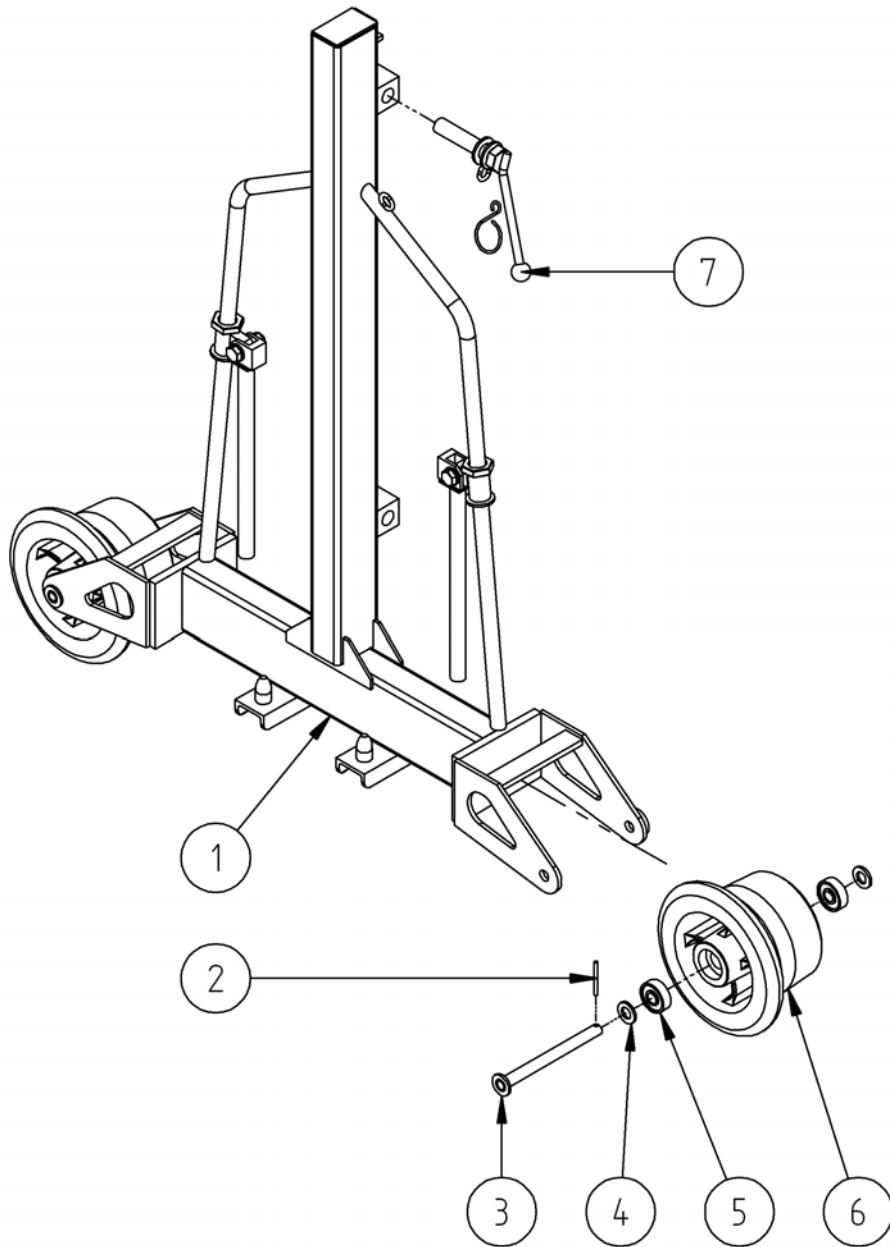
4. ASSEMBLY PARTS

4.1 Main Assemblies



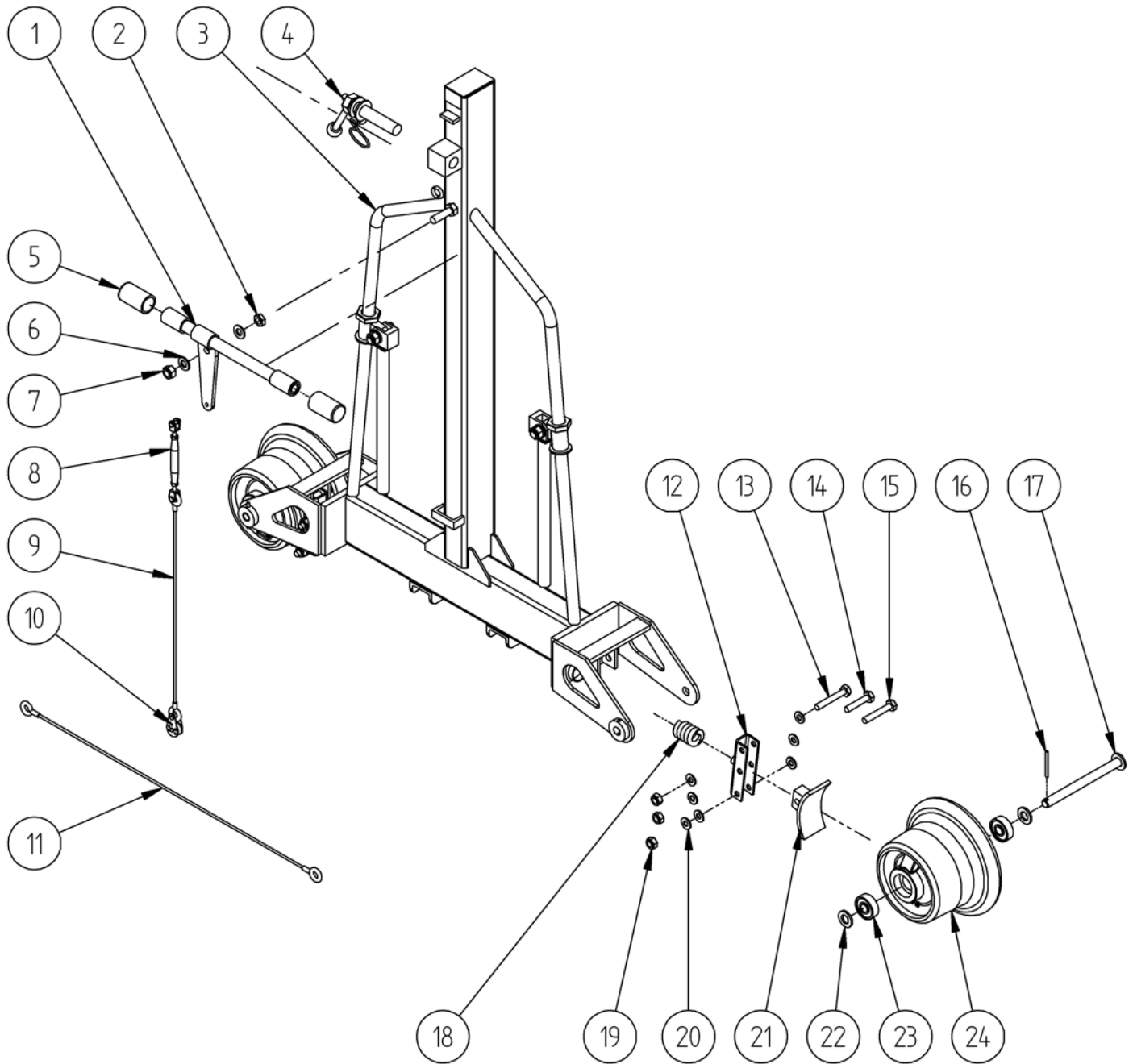
Item	Part No.	Description	Qty
1	28610	TOP BEAM ASSY (STANDARD)	1
	33907	TOP BEAM ASSY (LUL)	1
2	28549	RAIL CARRIER ASSY	1
3	28375	BOTTOM CROSS BEAM ASSY	1
4	33894	PLAIN FRAME ASSY (STANDARD)	1
	33905	PLAIN FRAME ASSY (LUL)	1
5	33895	BRAKE FRAME ASSY (STANDARD)	1
	33906	BRAKE FRAME ASSY (LUL)	1

4.2 Un-braked End Frame Assembly Parts



Item	Part No.	Description	Qty
1	28249	PLAIN FRAME ASSY	1
2	040221232	Ø3/16" x 2" LG SELOC PIN	2
3	05202	AXLE PIN ASSY	2
4	040285123	M16 HD PLAIN WASHER	4
5	040560027	BEARING	4
6	05104	M/C WHEEL (STANDARD)	2
	28567	NYLON WHEEL (LUL)	2
7	28413	CLAMPING SCREW	1

4.3 Braked End Frame Assembly Parts



Notes:

Use Loctite 480 to secure handle grips (Item 4).

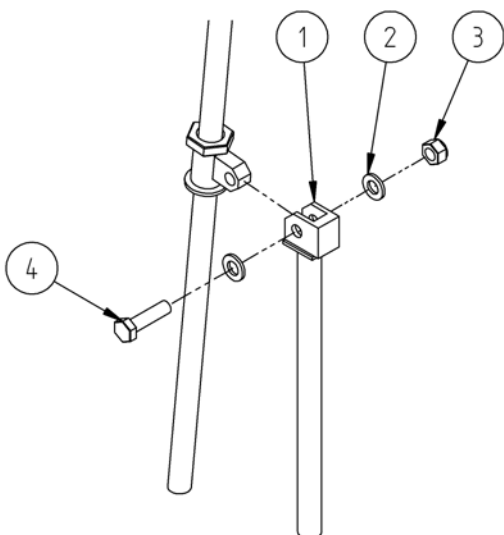


After changing any brake parts check the brakes using the Brake Test Tool (Part No. 34711).



Item	Part No.	Description	Qty
1	28546	BRAKE HANDLE ASSY	1
2	040445148	M12 Zn PLATED HALF NUT	1
3	28303	BRAKE FRAME W/ASSY	1
4	28413	CLAMPING SCREW	1
5	040991395	RED HANDLE	2
6	040285106	M12 Zn PLATED PLAIN WASHER	2
7	040420015	M12 Zn PLATED NYLOC NUT	1
8	040991104	M6 RIGGING SCREW	1
9	28627	VERTICAL BRAKE CABLE	1
10	040991117	PULLEY	1
11	28626	HORIZONTAL BRAKE CABLE	1
12	28318	PIVOT MEMBER W/ASSY	2
13	040315092	M10 x 50 Zn PLATED HEX HD SCREW	2
14	040305049	M10 x 65 Zn PLATED HEX HD BOLT	2
15	040305048	M10 x 60 Zn PLATED HEX HD BOLT	2
16	040221232	Ø3/16" x 2" LG SELOC PIN	2
17	05202	AXLE PIN ASSY	2
18	040980051	Ø1 1/4" OD x 2" LG DIE SPRING	2
19	040420013	M10 Zn PLATED NYLOC NUT	6
20	040285105	M10 Zn PLATED PLAIN WASHER	14
21	33485 28541	BRAKE PAD ASSEMBLY (STANDARD) BRAKE PADD ASSEMBLY (LUL)	2 2
22	040285123	M16 HD PLAIN WASHER	4
23	040560027	BEARING	4
24	05104 28567	M/C WHEEL (STANDARD) NYLON WHEEL (LUL)	2 2

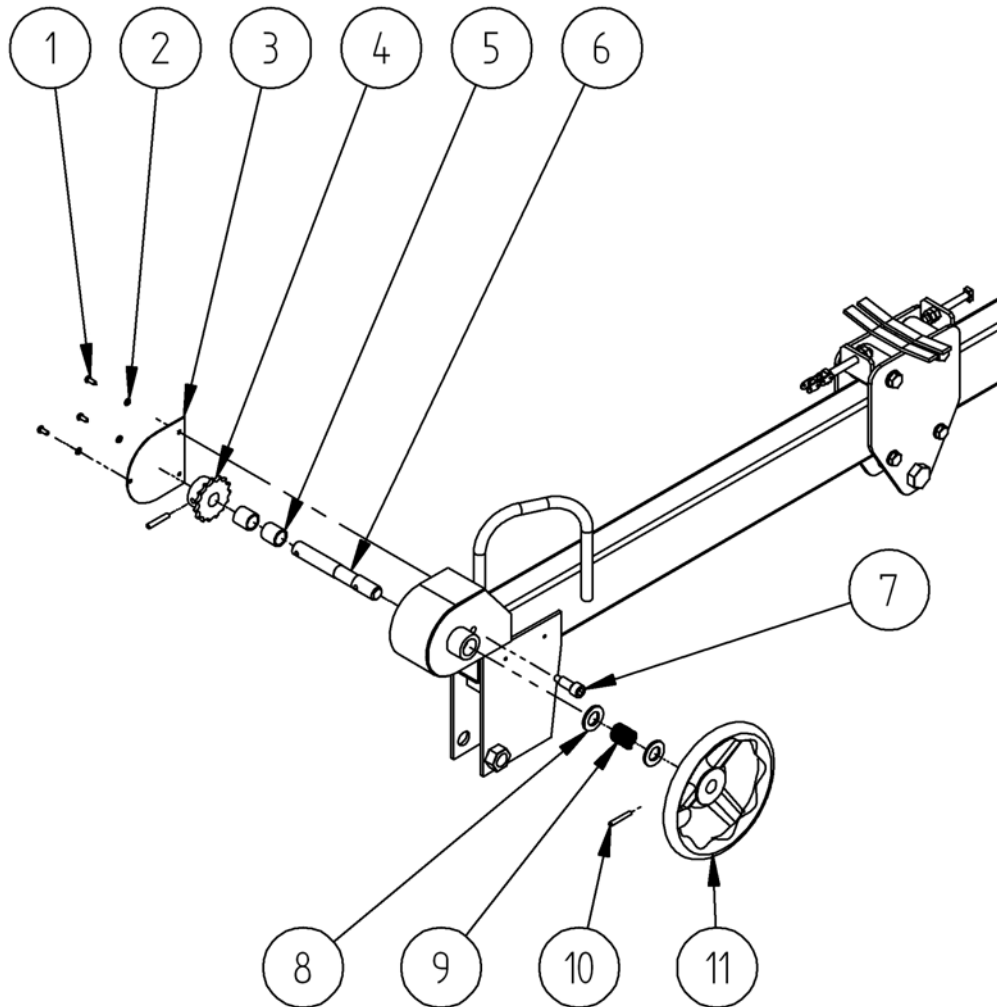
4.4 Lifting Handle Assembly Parts



Item	Part No.	Description	Qty
1	28505	LIFTING HANDLE ASSY	4
2	040285106	M12 Zn PLATED PLAIN WASHER	8
3	040420015	M12 Zn PLATED NYLOC NUT	4
4	040305063	M12 x 45 Zn PLATED HEX HD BOLT	4

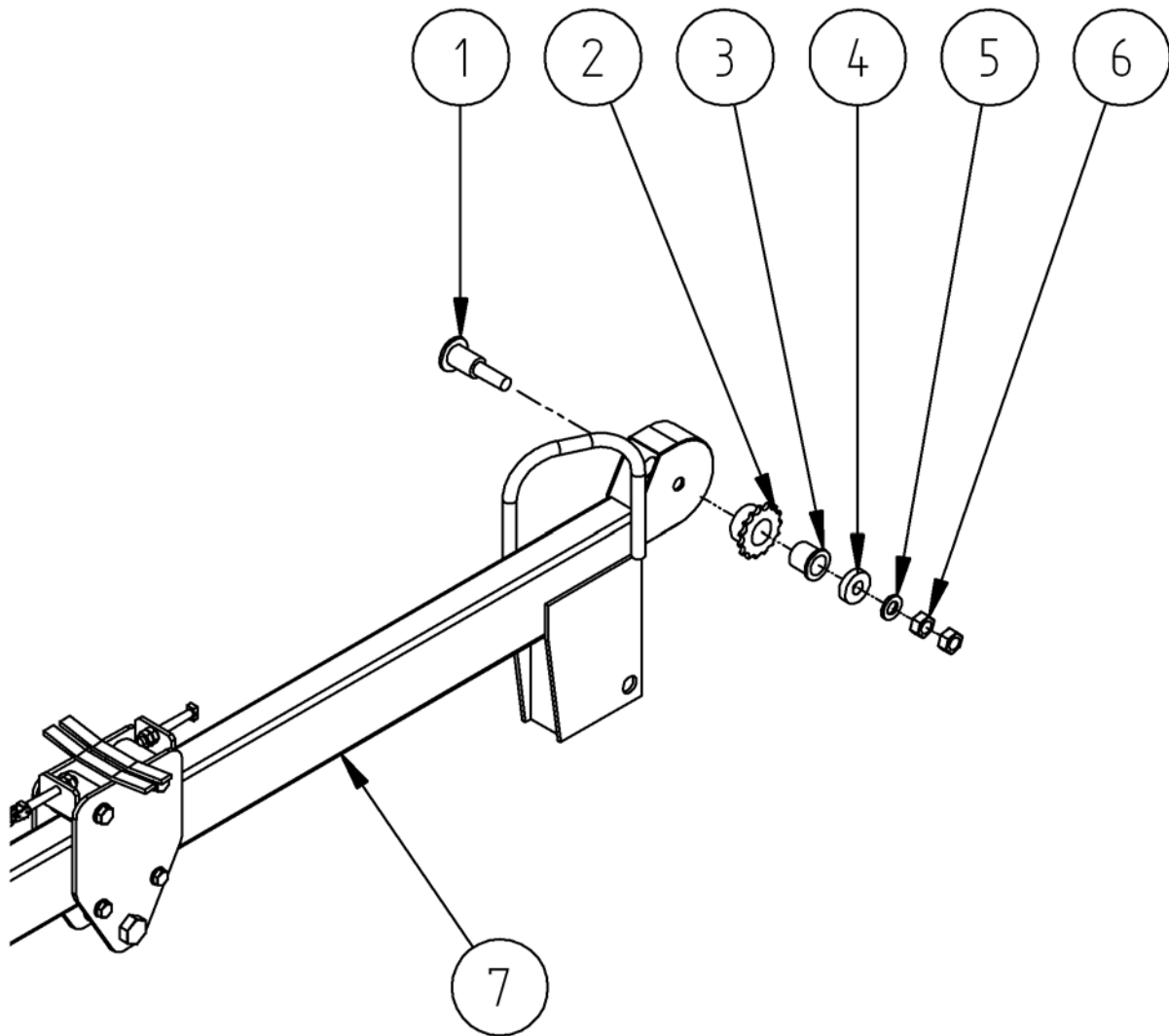
4.5 Top Beam Assembly

4.5.1 Top Beam Assembly Braked End



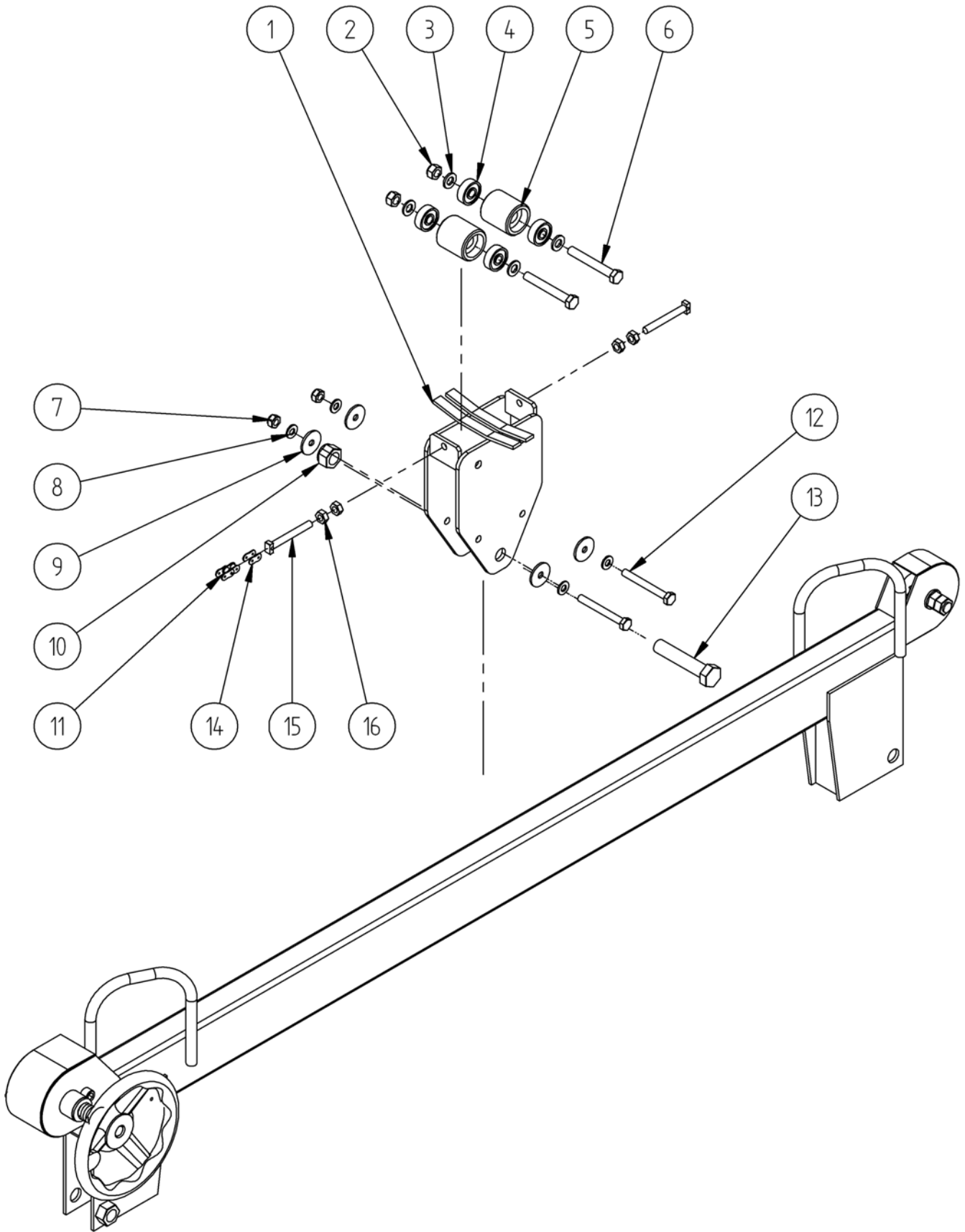
Item	Part No.	Description	Qty
1	040320240	M5 x 12 Zn PLATED SKT BUTTON HD SCREW	3
	040327012	M5 x 12 CAPTIVE SKT HD SCREW (>2009)	3
2	040285102	M5 Zn PLATED PLAIN WASHER	3
		NOT FITTED >2009	
3	28428	BUARD SIDE PLATE	1
4	28469	DRIVE M/C SPROCKET	1
5	040240068	OILITE BUSH	2
6	28470	DRIVE PIN	1
7	28566	M/C CAP SCREW	1
8	040285110	M10 Zn PLATED PLAIN WASHER	2
9	040980116	Ø1" OD x 1 1/2" LG COMP SPRING	1
10	040191624	Ø1/4" x 1 1/2" SPIROL PIN	2
11	28472	M/C HANDWHEEL	1

4.5.2 Top Beam Assembly Un-braked End



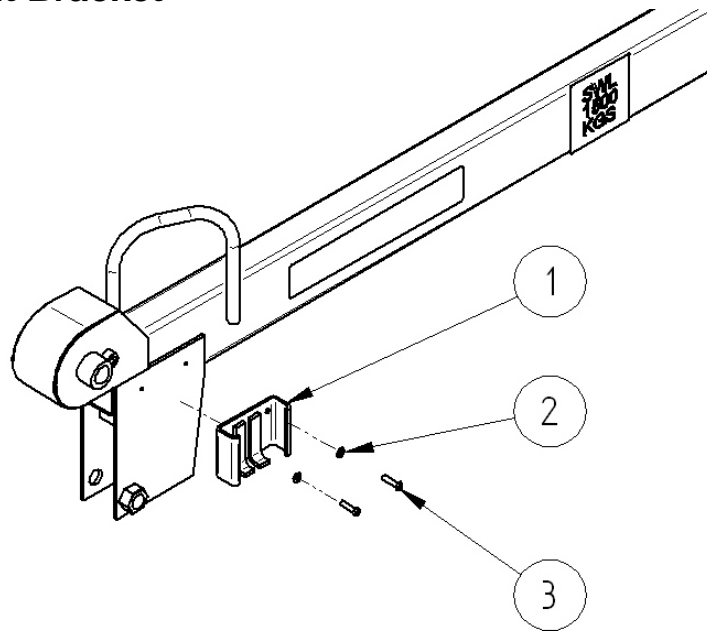
Item	Part No.	Description	Qty
1	28476	PIN ASSY	1
2	02667	FREE M/C SPROCKET	1
3	28467	M/C BUSH	1
4	28594	DRIVE SPACER	1
5	040285123	M16 HD PLAIN WASHER	1
6	040445054	M16 Zn PLATED FULL NUT	2
7	28402	TOP BEAM W/ASSY	1

4.5.3 Top Beam Assembly Carriage and Traverse Mechanism



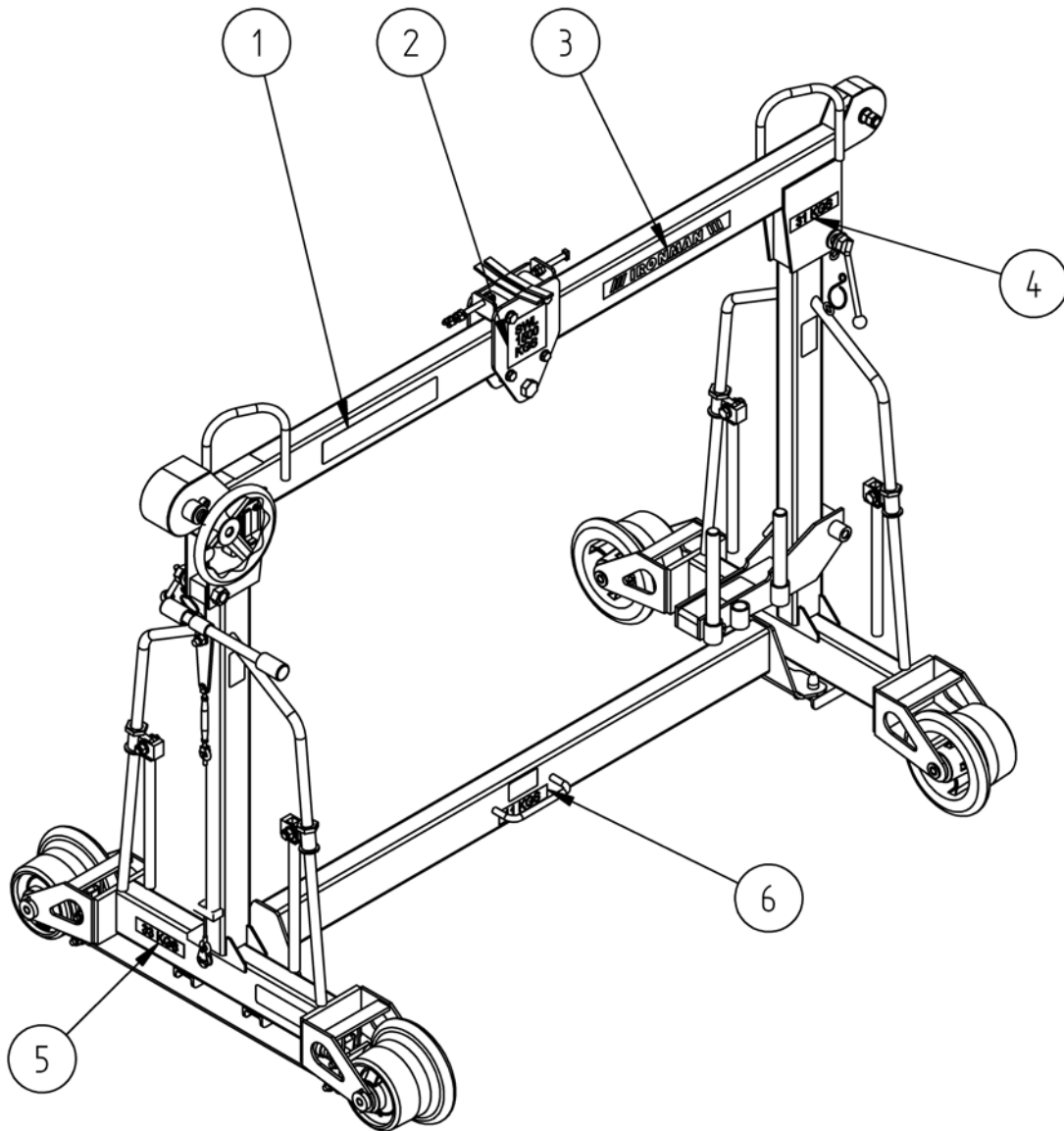
Item	Part No.	Description	Qty
1	28462	CARRAIGE W/ASSY	1
2	040420015	M12 Zn PLATED NYLOC NUT	2
3	040285106	M12 Zn PLATED PLAIN WASHER	4
4	040560009	BEARING	4
5	28457	ROLLER	2
6	040305072	M12 x 90 Zn PLATED HEX HD BOLT	2
7	040420013	M10 Zn PLATED NYLOC NUT	2
8	040285105	M10 Zn PLATED PLAIN WASHER	4
9	28460	NYLON WASHER	4
10	040420018	M20 Zn PLATED NYLOC NUT	1
11	040590001	1/2" PITCH CHAIN	4m
12	040305054	M10 x 90 Zn PLATED HEX HD BOLT	2
13	040305134	M20 x 100 Zn PLATED HEX HD BOLT	1
14	040590003	1/2" PITCH CHAIN LINK	2
15	28577	M/C TENSION SCREW	2
16	040445051	M10 Zn PLATED FULL NUT	4

4.5.4 Top Beam Light Bracket








Item	Part No.	Description	Qty
1	33268	LIGHT BRACKET W/ASSY	2
2	040320260	M6 x 25 Zn PLATED SKT BUTTON HD SCREW	4
3	040285103	M6 Zn PLATED PLAIN WASHER	4


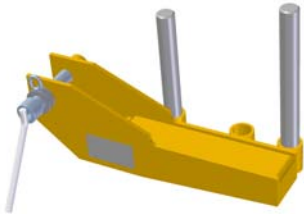

5. LABELS



Item	Part No.	Description	Qty
1	040991527	PERMAQUIP LABEL 300 x 50 (STD)	1
	28611	TIE BAR LABEL (LUL)	2
2	33908	SWL LABEL	1
3	28734	IRONMAN LABEL	1
4	33909	PLAIN (STD)/TOP MASS LABEL	2
5	33911	BRAKE (STD) MASS LABEL	1
	33912	BRAKE (LUL) MASS LABEL	1
6	28613	CROSS BEAM MASS LABEL	1
7	37242	LIMIT LABEL (ON TOP BEAM, NOT SHOWN)	1

6. MAIN COMPONENTS AND ASSEMBLIES

DESCRIPTION		PADS Cat. No.	PART NO
<p>Ironman (standard) Assembly complete with Yale Pul-Lift, Camlok Rail Clamp, Adaptor Link, Single Leg Lifting Chain and Rail Carrying Bracket (lifting gear not shown)</p>		94/009001	28957
<p>Ironman (LUL) Assembly complete with Yale Pul-Lift, LUL Rail Clamp, Adaptor Link, Single Leg Lifting Chain and Rail Carrying Bracket (lifting gear not shown)</p>		<p>LUL Certificate Number PE007/1057</p>	28717
<p>Ironman (standard) complete with Rail Carrying Bracket only</p>			28397
<p>Ironman (LUL) complete with Rail Carrying Bracket only</p>			33273
<p>Adaptor Link Assembly</p>			27924
<p>Yale Pul-Lift</p>			040590025
<p>Single Leg Lifting Chain</p>			28640
<p>Brake Test Tool</p>			34711
<p>Camlok Rail Clamp</p>			040590057

LUL Rail Lifting Clamp			06275
Rail Carrying Bracket			28549
Red Light			040820218

For spare parts not shown please contact Permaquip Ltd for further information and support.

Our contact details are shown on the front of this User Guide.

In order to avoid delay and to have your orders fulfilled promptly,

Please telephone, e-mail, fax or write giving the following information:

- 1. Company name.**
- 2. Contact details.**
- 3. Invoicing and delivery details.**
- 4. Purchase order number.**
- 5. Method of delivery.**
- 6. Part number, description and quantity for each item.**

