

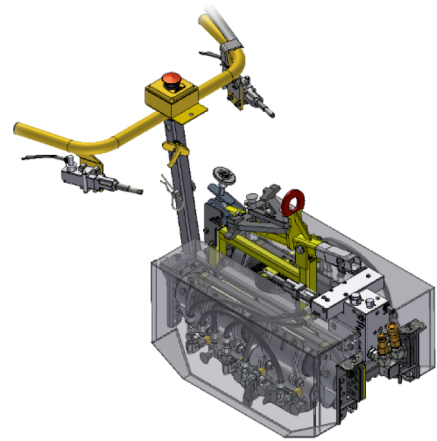
Clippers

E-Clip/PR Clip Inserter and Remover – FP-190

This work head installs and removes Pandrol E and PR clips on concrete and timber sleepers.

Features

- **Part No. FP-190-TP**
- Unique ram system applies 4 tonne insertion and extraction force.
- Suitable for inserting galvanised clips.
- Clips-up even with dropped or low sleepers.
- Tool free, 3-minute change over from clip-up to un-clip.
- Ergonomic adjustable height operating handle.
- Dual trigger control, pull cable standard, push button solenoid on request.
- 100 % maintenance free.
- Fully guarded.
- Includes E-stop and work light.
- Supplied with transport/stowage frame and lift bar.



Trackpack Head - **FP-190-TP**



E-Clip/PR Clip Inserter and Remover – FP-190-HH Hand Held

This innovative lightweight design eliminates the need for an operator to apply high force to a Panpuller while standing on unsteady ballast, as well as stops operators overdriving clips, which reduces the toe load on the clip. This machine is ideally suited to small output gangs on shutdowns and spot work.

Features

- **Part No. FP-190-HH**
- Lightweight
- Unique ram system applies 4 tonne insertion and extraction force.
- Suitable for inserting galvanised clips.
- Operate with any ½" square drive high torque impact wrench



E-Clip/PR Clip Remover – FP-186



The Elastic fastener remover has been recognised by NSW Mining and Hunter Manufacturing as the safest method of removing Pandrol E and PR railway fasteners. The machine is Network Rail Approved and CE Certified.

The machine will remove the fasteners in many track conditions without the need for the operator to use hammers. Even Frozen / Rusted clips can be successfully removed with this work head.

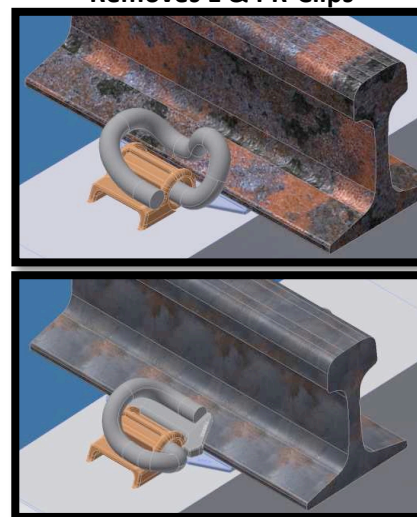
PATENTED

The E-Clip/PR Clip remover is currently one of nine hydraulic work heads available for the Trackpack system.

Features

- Removes the requirement of hitting clips with a hammer, preventing operator injury
- Machine weight counterbalanced for minimum operator effort – attaches to a Trackpack or dedicated powerpack
- Leaves E-Clips in parked position ready for reinsertion
- Under normal conditions – clips up E/PR Clip on either side of one rail in approx 2-5 seconds
- Under Severe conditions – unclips E/PR Clips on either side of one rail in approx 6-180 seconds and may also require heating of the shoulder to assist with removal
- Dual trigger operation for safety

Removes E & PR-Clips



Models	FP-186-TP	FP-186-TPUK	FP-186-HE	FP-186-YE
Engine	Trackpack Work Head	Trackpack Work Head – UK Model	13HP Honda® Petrol Electric Start	7HP Yanmar® Diesel Electric Start
Dimensions (mm) LxWxH	1600 x 740 x 1060	1600 x 740 x 1060	2800 x 740 x 1200	2800 x 740 x 1200
Approx Weight (wet)	120kg	120kg	250kg inc counter bal weights	250kg inc counter bal weights
Approx clip Cycle	3-180 sec	3-180 sec	3-180 sec	3-180 sec
Fuel Type	Trackpack	Trackpack	Petrol	Diesel
Battery	Trackpack	Trackpack	12V	12V

E-Clip/PR Clip Remover – FP-186-EYE

The 186-EYE E-Clip Remover is designed to remove E and PR Clips (elastic fasteners) that are broken at the shoulder or severely weathered where conventional methods are no longer successful.

The 186-EYE has the ability to be used on rail sizes from 41kg/m to 68kg/m rail using traditional concrete sleepers and can be swivelled from one side of the rail to the other in a matter of seconds.

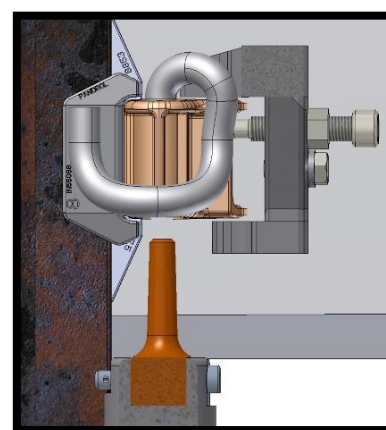
This machine strikes the end of the clip inside the shoulder and punches the clip out, while supporting the shoulder of the sleeper. In severe conditions heating of the shoulder may also be required to assist in clip removal.

By using the “186-EYE Broken E-Clip Remover”, injuries from traditional methods of removing these clips (swinging hammers) have been eliminated. These are (but not limited to):

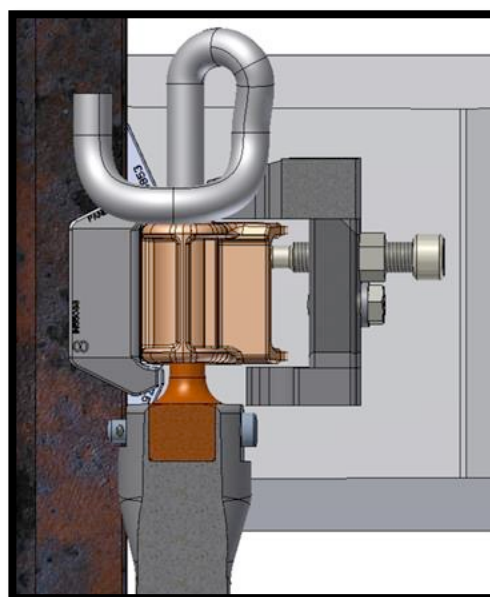
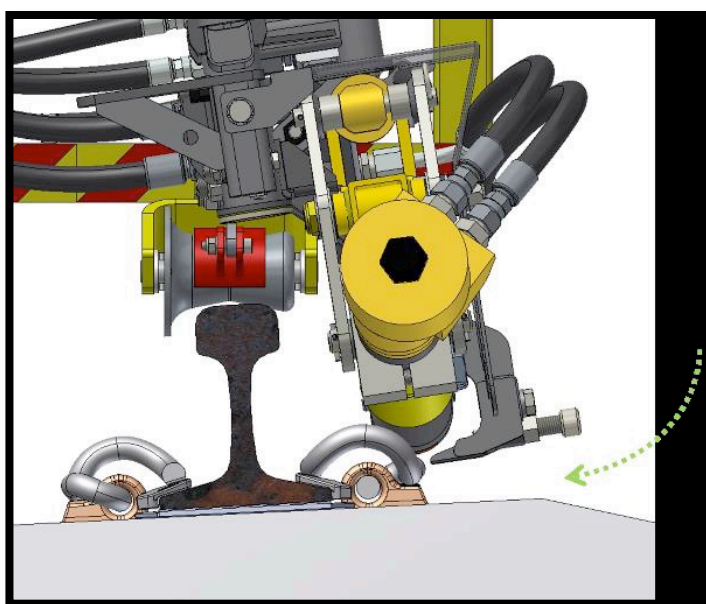
- Back strain
- Repetitive strain injury
- Hammer strikes to legs
- Damage to feet through striking/or clips hitting ball of foot
- Struck by flying clips
- Infrastructure damage

Features

- Counterbalanced design (user to lift <5kg during operation)
- Emergency stop, hose covers, dual handed operation
- Guarding and lifting points (mechanical lifts)
- Trackpack work-head



PATENTED

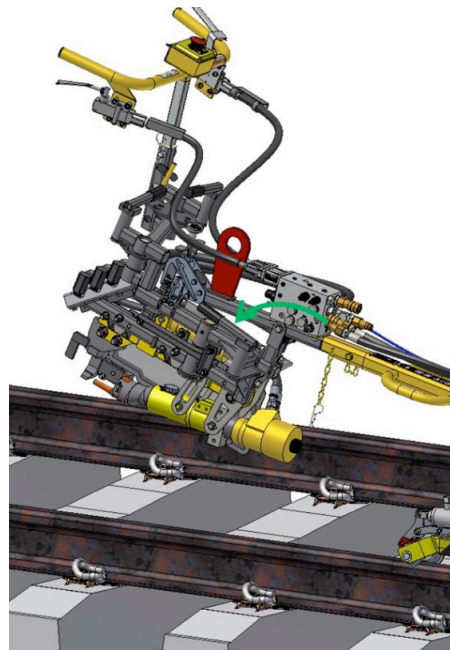
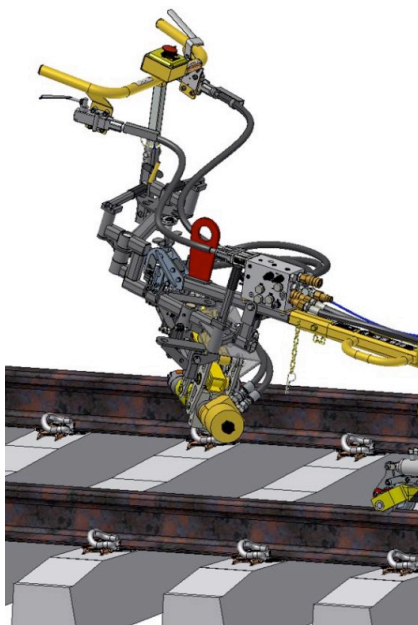
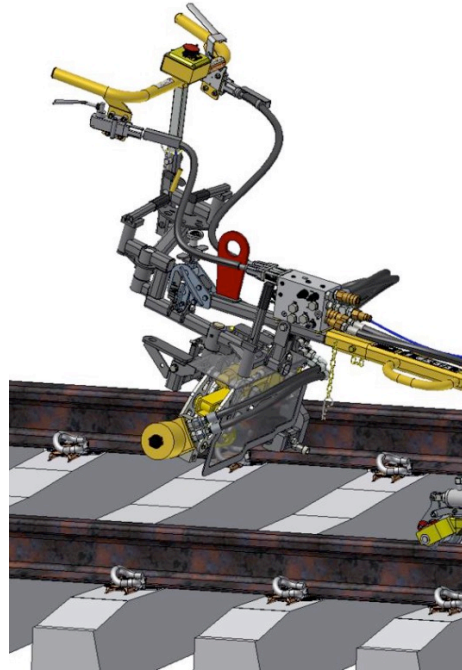
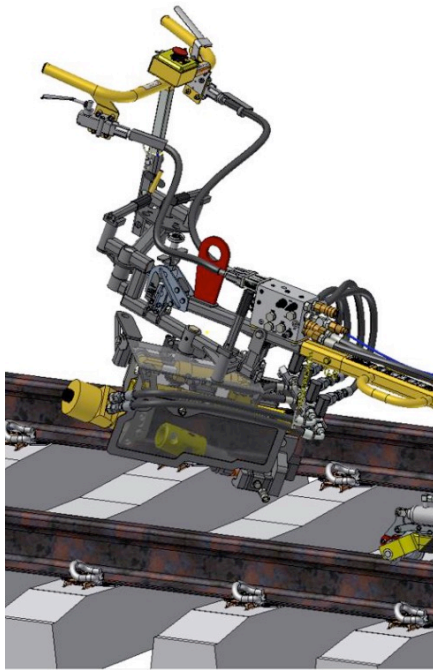


Changing sides of the rail

The 186-EYE is designed to alternate between rail sides quickly and easily.

The operator handles are designed to position the operator on the opposite side of the rail to the hammer, this is for two reasons:

- The handles counterbalance the weight of the hammer, keeping load on the operator to a minimum (< 5kg).
- The operator is removed from the line of force, eliminating any risk of being struck by a flying clip.



Fastclip / Traklok II Inserter and Remover & Mackay Clip Inserter – FP-164

Installs and removes Pandrol Fast Clip on concrete sleepers and Traklok clips on steel sleepers. The clipper comes complete with a power pack, rail trolley with tool tray and a set of Fastclip clipping and unclipping jaws. Honda Petrol or Yanmar Diesel engines are available, and a night light option is offered with all electric start machines.



Features

- Quick change jaws, pull two pins to swap from clip to unclip
- Simple trigger action for fast clipping and release to reset ready for the next set of clips
- Only 3 seconds cycle time means a very fast operation
- Clips and unclips uninsulated Fast Clips
- One setting is able to clip on rail from as little as 30 kg/m to 68 kg/m track
- Machine weight counterbalanced for minimum operator effort
- All trolley gauges available with brakes including dual gauge trolleys
- Dual Trigger Operation for safety
- Easy glide trolley wheels
- Trackpack head available for use with Trackpack system (see Trackpacks catalogue page for information)
- Patented hydraulic oil cooler also minimises circuit heat

Dedicated Fastclip/Traklok clipping machine






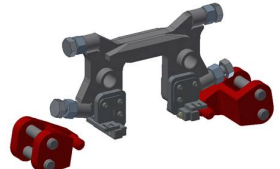
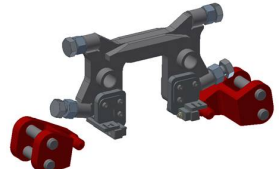
Available options

- Work light
- exhaust gas scrubbers
- noise reduction enclosures
- Traklok II Steel Clip jaws
- Traklok II Steel Unclip jaws
- Fastclip II unclip jaws for small rail

Models	FP-164-TL01 FP-164-FC01	FP-164-HE	FP-164-HR	FP-164-YE
Engine	MEC Trackpack	13HP Honda® Petrol Electric Start	13HP Honda® Petrol Recoil Start	7HP Yanmar® Diesel Electric Start
Dimensions (mm)	800 x 740 x 1060	2800 x 740 x 1200	2800 x 740 x 1200	2800 x 740 x 1200
Weight (wet)	90kg	200kg	200kg	200kg
Fuel Type	Trackpack	Petrol	Petrol	Diesel
Battery	Trackpack	12V		12V
Hydraulic Oil*	ISO68Trackpack	ISO68	ISO68	ISO68

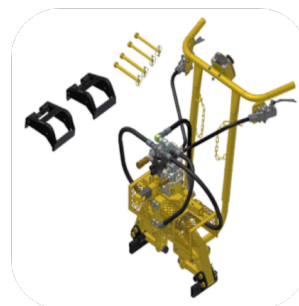
Fast Clip & Traklok II Jaw Options (Quick Change)

The Fastclipper work-head has the capabilities to remove and install both insulated and non-insulated Traklok II clips that are insulated and non-insulated.


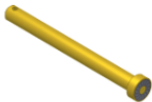
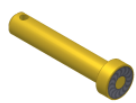
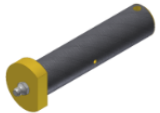

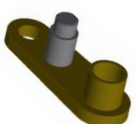
Choice of jaws:			
Item Number	Number Required	Description	Part Image
1640146	2	FastClip Clip up Jaw (All rail sizes)	
1640212	2	FastClip and Traklok II (non-insulated) UnClip Jaw (41-68kg rail)	
1640213	2	Unclip Jaw Blade	
1640214	2	Unclip Jaw Blade Pin	
RCLIP03	2	R-Clip 3mm to retain Unclip Jaw Blade	
1640193	2	Traklok II B296 Steel Clip up Jaw	
1640201	1	Traklok II Reaction Plate with unclip jaws (41-68kg rail)	
1640183	2	Traklok II insulated/non-insulated unclip jaw (2x jaws included in 1640201)	

Fastclip Quick Change Jaws Retrofit Kit

Change Jaws from clip to unclip in MINUTES, simply remove 3x pins per arm to changeover.



Parts required to convert to new style quick change jaws

Item Number	Number Required	Description	Part Image
1640148	2	Clipping Arm	
1640173	4	Main Unclip Jaw pin	
1640175	4	Main pin for Clip up Jaw	
1640154	2	Centre quick change pin assembly	
PIN0604	10	Lynch Pin	
1640171	2	Jaw Link to Frame with Boss	
1640172	2	Jaw Link to Frame	