

# ART 17TH

## WITH PANTOGRAPH



### THE MOST INNOVATIVE AND TECHNICALLY ADVANCED MEWP AVAILABLE TODAY

- WORKS FROM ZERO CANT TO 180MM CANT IN WORK MODE AND 200MM IN TRAVEL MODE
- 8.94M OUTREACH WITH TELESCOPIC ARM FULLY EXTENDED
- PANTOGRAPH MEASURES AND RECORDS HEIGHT AND STAGGER MEASUREMENTS WHILE ON THE MOVE
- TRAVELS OVER THE SIDE AT 90 DEGREES AT A 120 CANT WORKING AT ALL TIMES WITH A FULL LOAD OF 400KG
- NEW VISUAL OVERLOAD SYSTEM (OPTION)

#### NEW MULTI GAUGE



ADJUSTABLE  
(1000 - 1600MM)  
TRACK GAUGE ENABLES  
THE ART 17TH TO  
OPERATE ON ALL  
MAJOR RAILWAY LINES

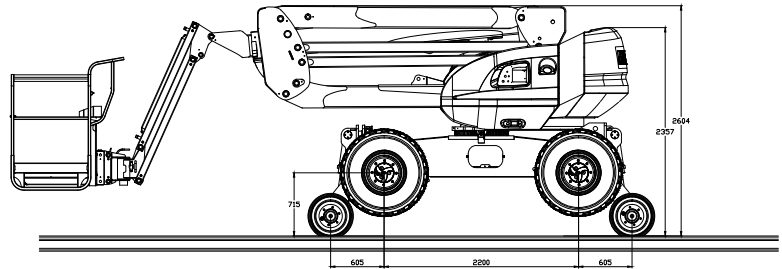


ON BOARD  
CONTROL  
PANEL WITH  
PANTOGRAPH IN  
WORKING MODE

FOR MORE DETAILS ON OUR RANGE OF PRODUCTS CALL 01555 773 027  
[WWW.RAILPRODUCTS.UK.COM](http://WWW.RAILPRODUCTS.UK.COM)

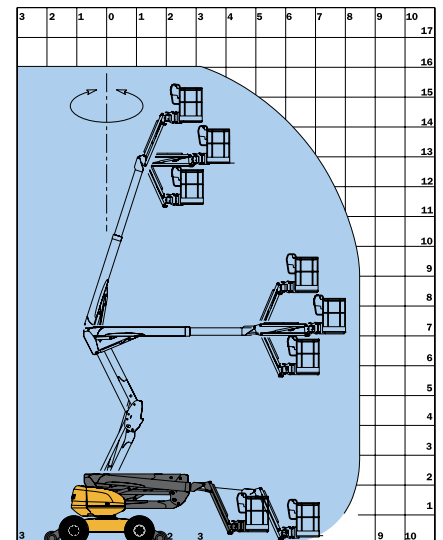
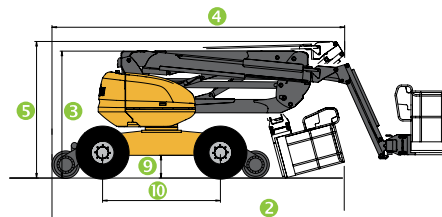
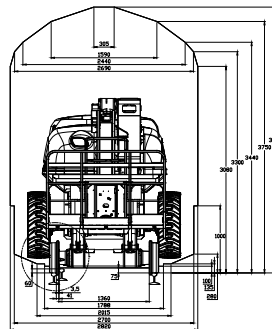
## Specification

Working height: 16.40m  
Platform floor height: 14.40m  
Max. outreach: 8.94m  
Up and over clearance: 7.15m  
Jib movement: +70°/-70°  
Basket rotation: +90°/-90°  
Turret rotation: 360°  
Capacity: 400kg  
Basket size: 2.30 x 0.93m  
Lifting time: 40s



1. Width: (overall width with basket) 2.30m
2. Length: 7.23m
3. Height: 2.37m
4. Length: 4.94m
5. Height: (Travel / transport) 2.70m
6. Inside turning radius: 1.32m
7. Outside turning radius: 3.68m
8. Outside turning radius with basket: 6.39m
9. Ground clearance: 42.5cm
10. Wheelbase: 2.20m

Working speed on rail: 1km/h  
Maximum travel speed rail: 12km/h  
Engine: Kubota type V2403-M,  
4 cylinder 46hp  
Gradeability on rough: 40%  
Max. slope accepted: 5° or 9%  
Hydraulic tank capacity: 120 l.  
Diesel tank capacity: 52 l.  
Total weight: only 12.100kg



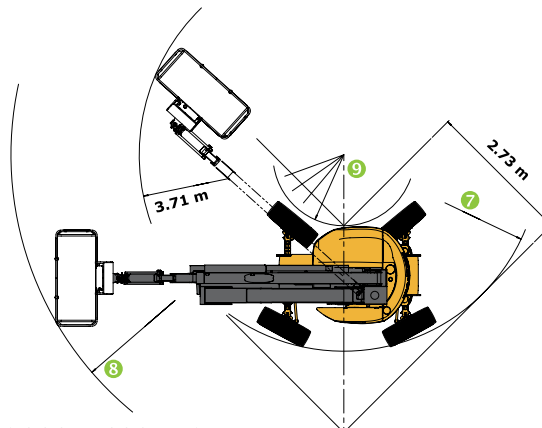
- 4 wheel braking (On road and rail)
- 4 wheel drive (On road and rail)
- 4 wheel parking brake (On road and rail)
- Sole dealership worldwide
- Able to travel under live wire
- Able to on/off tracking in 150mm cant
- Full stability on 180mm cant in work mode and 200mm cant in travel mode
- Option of Adjacent Line Open (ALO) work

## Standard equipment

- Large basket with 3 access points
- Fully proportional controls
- 4 simultaneous movements
- Foam filled tyres
- Differential lock
- Limited slip front axle
- Diagnostic calibrator
- Hourmeter
- Low fuel indicator
- Horn
- Flashing beacon
- Audible/visual tilt & overload alarms
- Slope override
- Lifting eyes
- Electric emergency recovery pump
- 1 tool tray
- Full vandal protection
- Lockable control panel covers
- Continuous rotation

## Options

- Multi Gauge (1000 - 1600mm)
- ALO capability
- On board generator
- 230V outlet with residual current device
- Piped for compressed air
- Piped for water
- Biodegradable oil
- All movement alarm
- Beep on travel (Europe only)
- New visual overload system
- Extra working lights
- Catalytic purifier
- On board spill kit
- Panning unit
- Trailer



## Rail Products UK

Mountcairn, 22 Cairneymount Road  
Carluke, South Lanarkshire ML8 4EN

Phone: 0044 1555 773 027

Mobile: 0044 7788 924 848

Derek@railproducts.uk.com

[www.railproducts.uk.com](http://www.railproducts.uk.com)